

### Input data

|                       |       |                             |
|-----------------------|-------|-----------------------------|
| System of measurement |       | Metric                      |
| Input type            |       | Coupling for electric motor |
| Input speed           | [rpm] | 1400                        |
| Output speed          | [rpm] | 14                          |
| Ratio (i=)            |       | 100                         |
| Frequency             | [Hz]  | 50                          |
| Input options         |       | IEC                         |
| Requested input power | [kW]  | 0.25                        |
| Service factor        |       | 1                           |
| Rated Power P1        | [kW]  | 0.25                        |

### Output data

#### Gear unit **S RT 60 B3 100 71 B14 AC 25**

|                     |                     |                          |
|---------------------|---------------------|--------------------------|
| Type                |                     | RT - Worm speed reducers |
| Input type          |                     | S (Elastic coupling)     |
| Size                |                     | 60                       |
| Ratio (i=)          |                     | 100                      |
| Input flange        |                     | B14                      |
| Input speed         | [rpm]               | 1400                     |
| Output speed        | [rpm]               | 14                       |
| Rated output torque | [Nm]                | 83.56                    |
| Service Factor      |                     | 1                        |
| Efficiency          |                     | 0.49                     |
| Inertia moment      | [kgm <sup>2</sup> ] | 0.000104                 |

#### Gear unit configuration

|              |  |                     |
|--------------|--|---------------------|
| Output shaft |  | Hollow output shaft |
| Fixing       |  | Universal           |
| Version      |  | B3                  |

#### Output radial and axial loads

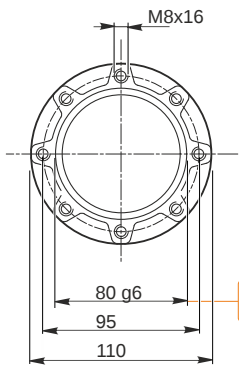
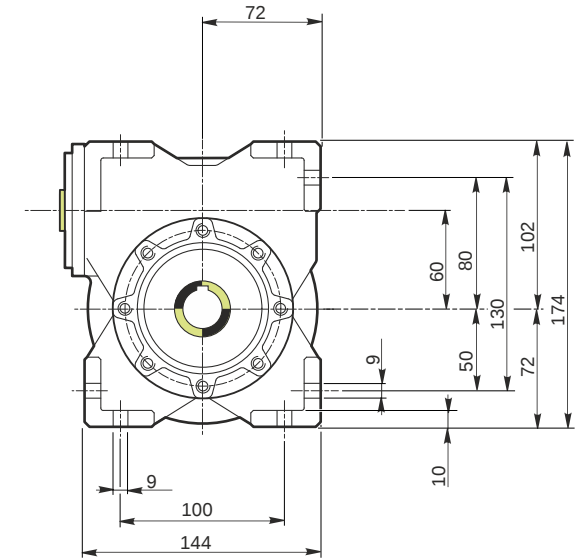
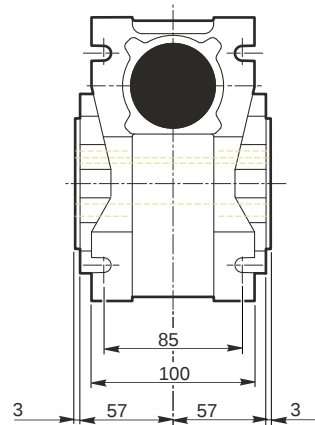
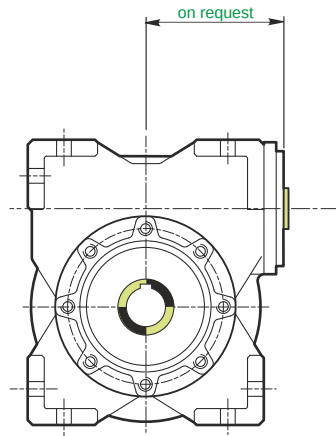
|                                   |     |      |
|-----------------------------------|-----|------|
| Ball bearings output radial load  | [N] | 5600 |
| Taper bearings output radial load | [N] | 6600 |
| Ball bearings output axial load   | [N] | 1120 |
| Taper bearings output axial load  | [N] | 1320 |

#### Accessories

|                     |  |       |
|---------------------|--|-------|
| Hollow output shaft |  | AC 25 |
|---------------------|--|-------|

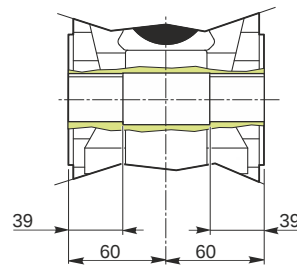
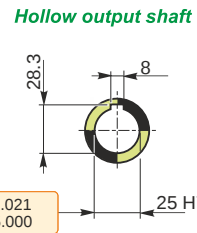
#### Electric motor coupling

|          |      |       |
|----------|------|-------|
| Size     |      | 71 A4 |
| Poles n. |      | 4     |
| Power    | [kW] | 0.25  |



79.99  
79.971

25.021  
25.000



**Mounting positions**

**B3**

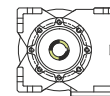
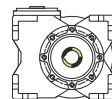
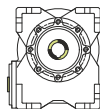
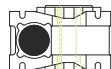
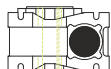
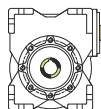
**B6**

**B7**

**B8**

**V5**

**V6**



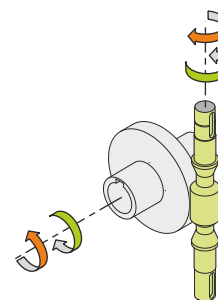
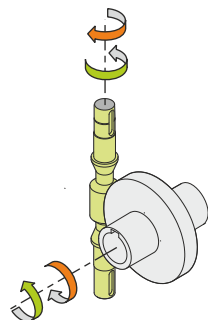
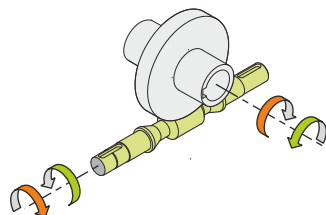
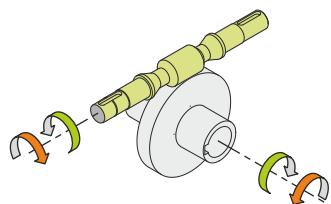
0.23



← Oil quantity [litres]

Lubricant type: Long life synthetic oil ISO VG320

**Direction of rotation**



**Weight**

Gear unit [kg] 6.5

**Gearing data**

|                  |        |
|------------------|--------|
| Axial module     | 1      |
| Number of starts | 1      |
| Lead angle       | 2° 51' |
| Pressure angle   | 20°    |

**Backdriving**

Static self-locking  
No back-driving  
Low dynamic back-driving