



SPARE PARTS EXPLODED VIEW
GAS WALL BOILERS

Model

EGIS PLUS

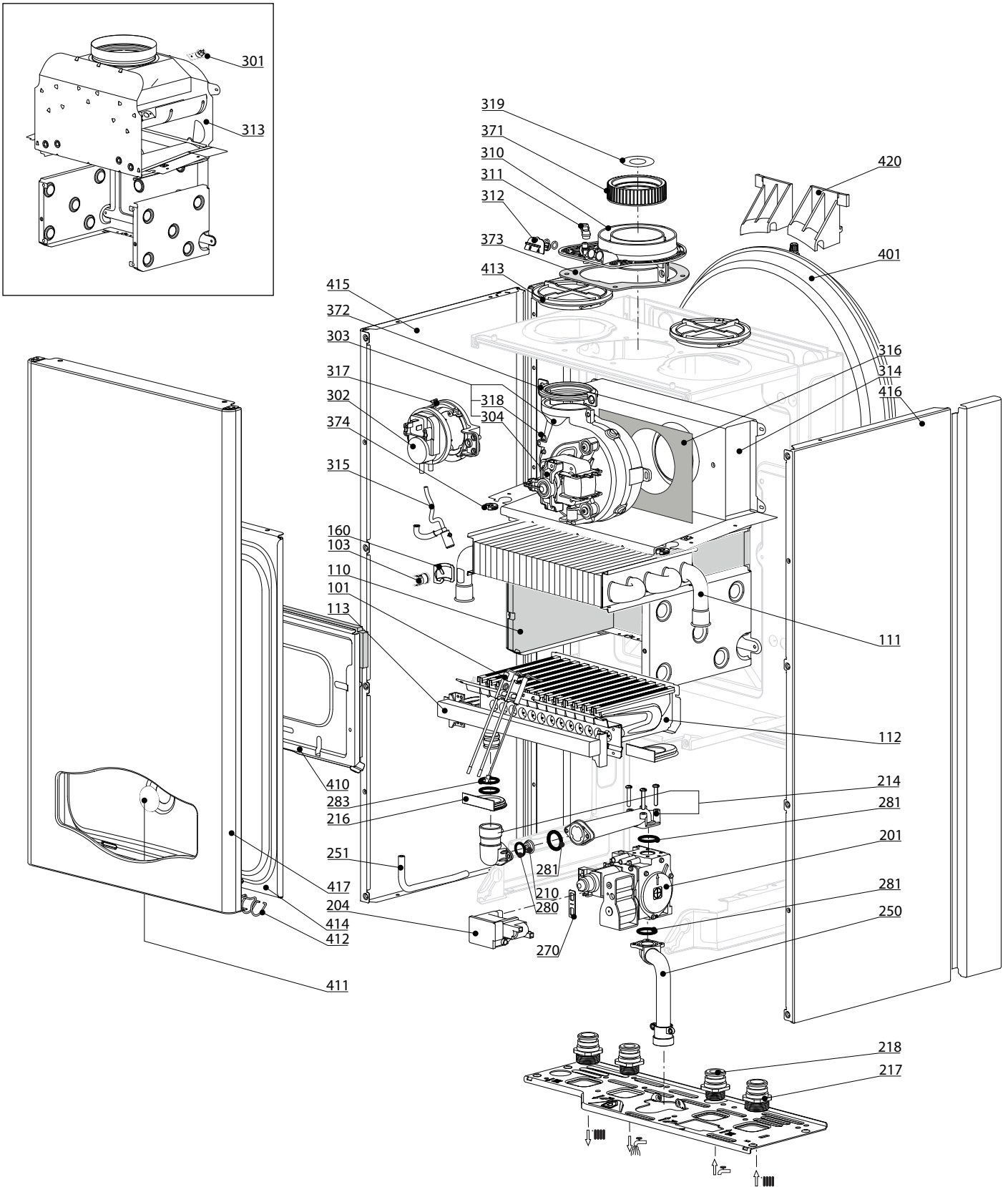
R8203322-02 - 10/09/2012

1	3300410	EGIS PLUS 24 CF LPG	03-2011	-
1	3300411	EGIS PLUS 24 CF NG	03-2011	-
2	3300412	EGIS PLUS 24 FF LPG	03-2011	-
2	3300413	EGIS PLUS 24 FF NG	03-2011	-
Col	Reference	Model type	Begin	End

100
200
300
400

EGIS PLUS

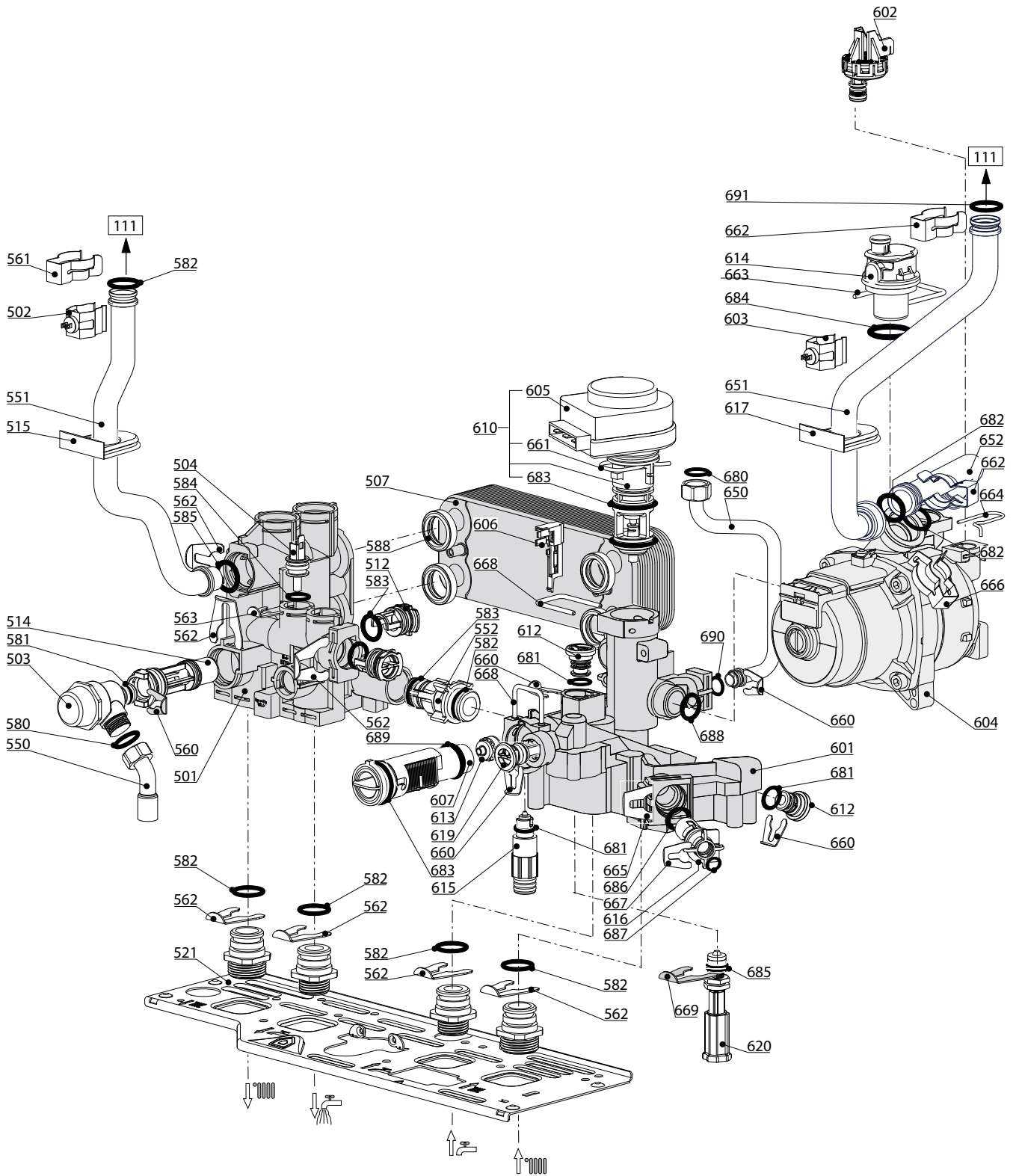
Domestic Gas Boilers



EGIS PLUS 24 CF
EGIS PLUS 24 FF

31

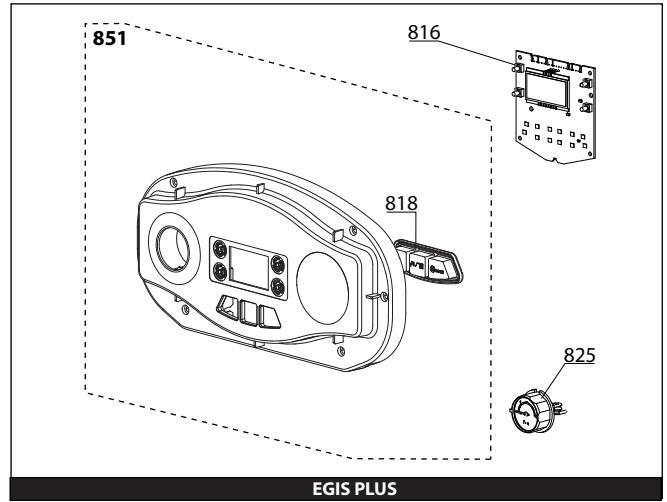
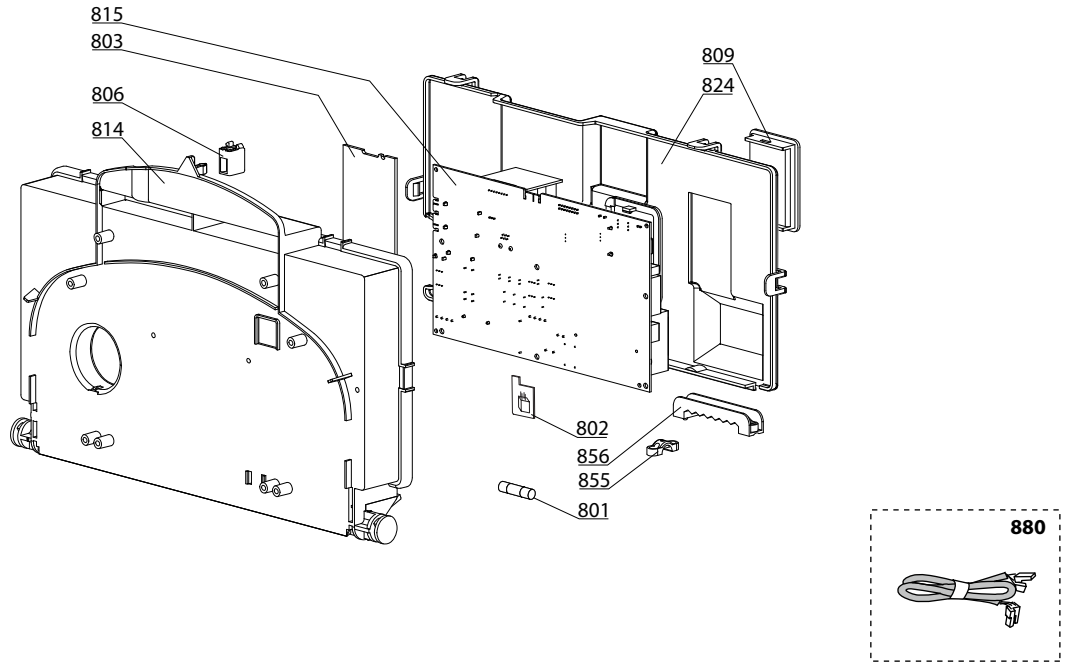
Description	Manf. Pt. N	Type																		
			1	2	3	4	5	6	7	8	9	10	11	12	13	14	15	16	17	18
0100 BURNER ASSEMBLY																				
0101 ELECTRODE (IGNITION/DETECTION)	65104549		•	•																
0103 THERMOSTAT 102°	65104500		•	•																
0110 PANELS (KIT)	65104695		•																	
PANELS (KIT)	65106298			•																
0111 MAIN EXCHANGER	65104247		•																	
MAIN EXCHANGER	65106297			•																
0112 BURNER	60001582		•																	
BURNER 11NP	65106294			•																
0113 GAS MANIFOLD 13 INJ. D:0.76	65104223	LPG	•																	
GAS MANIFOLD 11 INJ. D:0.80	65106605	LPG		•																
GAS MANIFOLD 13 INJ. D:1.25	65104302	MET	•																	
GAS MANIFOLD 11 INJ. D:1.32	65106302	MET		•																
0160 CLIP	61010050		•	•																
0200 GAS SECTION																				
0201 GAS VALVE	65104254		•	•																
0204 SPARK GENERATOR	65104653		•	•																
0214 PIPE (GAS VALVE/BURNER)	65104230		•	•																
0216 GROMMET	60000624		•	•																
0217 UNION (3/4)	65104326		•	•																
0218 UNION (1/2)	65104327		•	•																
0250 GAS PIPE	65104251		•	•																
0251 EPDM PIPE	65104296			•																
0270 GASKET (SPARK GENERATOR)	574279		•	•																
0281 O-RING 22,22X2,62	65104304		•	•																
0283 O-RING 17,17X1,78	65104303		•	•																
0300 FAN ASSEMBLY																				
0301 THERMOSTAT 75-65°C	999539		•																	
0302 AIR PRESSURE SWITCH 50 Pa	65104671-01			•																
0303 FAN	65104357			•																
0310 FLUE (EXHAUST MANIFOLD / HEADER)	65105393			•																
0311 AIR INTAKE COVER	573329			•																
0312 FLUE INTAKE PLUG	65104295			•																
0313 COMBUSTION CHAMBER 24CF	65104218		•																	
0314 COMBUSTION CHAMBER 24/28 FF	65106295			•																
0315 CONDENSATE TRAP	65104623			•																
0316 PANEL (INSULATION - FAN)	65104305			•																
0317 SUPPORT (AIR PRESSURE SWITCH)	65104378			•																
0318 VENTURI 15/24FF	65106516			•																
0319 RESTRICTOR KIT	60001598			•																
0371 COLLAR GASKET	65104258			•																
0372 FAN GASKET	65104257			•																
0373 GASKET	60000317			•																
0374 CABLE INLET RUBBER WASHER	60000716		•	•																
0400 SEALED CASE																				
0401 EXPANSION VESSEL	65104261		•	•																
0410 PANEL (COMBUSTION CHAMBER)	65104240		•																	
PANEL (COMBUSTION CHAMBER)	65106296			•																
0411 SIGHT GLASS	65104232			•																
0412 SPRING FRONT PANEL (KIT)	65104298			•																
0413 AIR RETURN COVER	65104249			•																
0414 PANEL (FRONT - SEALED CHAMBER)	65105678			•																
0415 CASE PANEL (L.H. SIDE)	65105676		•	•																
0416 CASE PANEL (R.H. SIDE)	65105677		•	•																
0417 CASE PANEL (FRONT)	60001604		•	•																
0420 EXPANSION VESSEL SUPPORT	65104696		•	•																



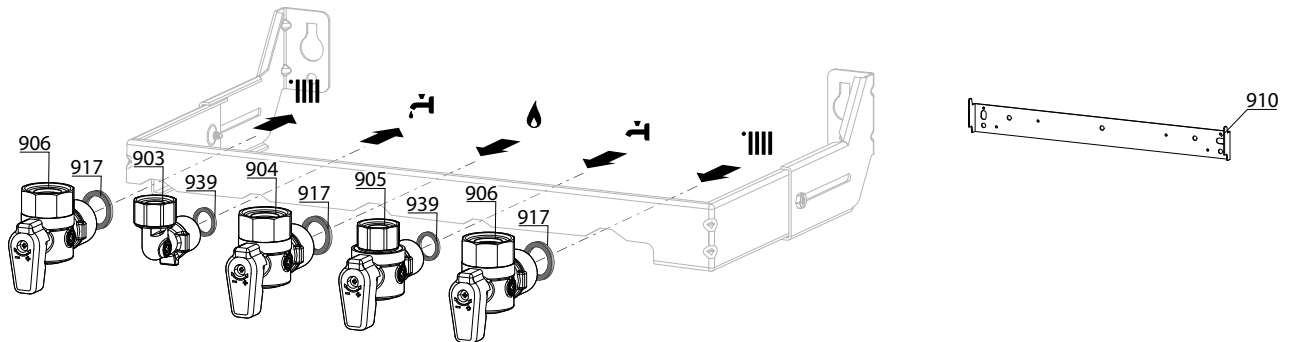
EGIS PLUS 24 CF
EGIS PLUS 24 FF

31

☉→	Description	Manf. Pt. N	Type																		
				1	2	3	4	5	6	7	8	9	10	11	12	13	14	15	16	17	18
0500	FLOW GROUP																				
0501	FLOW GROUP	65104312		•	•																
0502	TEMPERATURE PROBE + CLIP	990686		•	•																
0503	PRESSURE RELIEF VALVE 3 BAR	61312668		•	•																
0504	NTC PROBE	65104338		•	•																
0507	WATER / WATER HEAT EXCHANGER 16	65104333		•	•																
0512	PLUG	65104445		•	•																
0514	BY-PASS	65104336		•	•																
0515	GROMMET	60000808		•	•																
0521	HYDRAULIC GROUP SUPPORT	65104311		•	•																
0550	PIPE (SAFETY VALVE)	65104447		•	•																
0551	PIPE (C.H. FLOW)	65104252		•																	
	PIPE (C.H. FLOW)	65106309			•																
0552	BY-PASS PIPE	65104340		•	•																
0560	CLIP D:10	65104260		•	•																
0561	CLIP	61307589		•	•																
0562	CLIP D=18	65104259		•	•																
0563	CLIP	65104339		•	•																
0580	SHEET GASKET D: 13.9-10.4-1.5	60061853-02		•	•																
0581	O - RING (15.88X2.62)	65104337		•	•																
0582	O-RING D: 17.86-2.62	61308091		•	•																
0583	O - RING (15.54X2.62)	65104325		•	•																
0584	O-RING D: 11.91-2.62	60000850		•	•																
0585	O-RING 3,53X17,04	65104262		•	•																
0588	EXCHANGER GASKET	65104334		•	•																
0600	RETURN GROUP																				
0601	RETURN GROUP	65104335		•	•																
0602	LOW PRESSURE SWITCH	65105090			•																
0603	TEMPERATURE PROBE + CLIP	990686		•	•																
0604	PUMP 4M 1V	60001584		•	•																
0605	MOTOR - THREE-WAY VALVE	61302483-01		•	•																
0606	SENSOR (REED)	65104323		•	•																
0607	FLOW METER	65104317		•	•																
0610	MOTOR + SPRING 3 WAY VALVE KIT	60001583		•	•																
0612	PLUG	65104377		•	•																
0613	RIDUCTORS (KIT)	65104318		•	•																
0614	AUTO AIR VENT WITH O-RING	65104703		•	•																
0615	KIT DRAIN SCREW	60001385		•	•																
0616	WATER FILTER	60001372		•	•																
0617	GROMMET	60000807		•	•																
0619	CHECK VALVE CARTRIDGE	65105323		•	•																
0620	FILLING TAP KIT	65104324		•	•																
0650	PIPE (EXPANSION VESSEL)	65104253		•	•																
0651	PIPE (C.H. RETURN)	60001271		•																	
	PIPE (C.H. RETURN)	60001276			•																
0660	CLIP D:10	65104260		•	•																
0661	CLIP	65104332		•	•																
0662	CLIP	61307589		•	•																
0663	U-CLIP	65104704		•	•																
0664	CLIP	65104322			•																
0665	CLIP	65104331		•	•																
0666	CLIP	60000309		•	•																
0667	CLIP	65100680		•	•																
0668	CLIP	65104316		•	•																
0669	CLIP	65104339		•	•																
0680	GASKET 3/8	573521		•	•																
0681	O - RING (9.19X2.62)	65104313		•	•																
0682	O-RING 3,53X17,04	65104262		•	•																
0683	O - RING (23.47X2.62)	65104315		•	•																
0684	O-RING	65104705		•	•																
0685	O - RING (1.78X7.65)	65104329		•	•																
0686	O - RING (15.54X2.62)	65104325		•	•																
0687	O RING D: 5.7-1.9	61009834-10		•	•																
0688	O - RING (21.89X2.62)	65104320		•	•																
0689	O-RING 17,17X1,78	65104303		•	•																
0690	O-RING D: 8.9-2.7	61009834-14		•	•																
0691	O-RING D: 17.86-2.62	61308091		•	•																

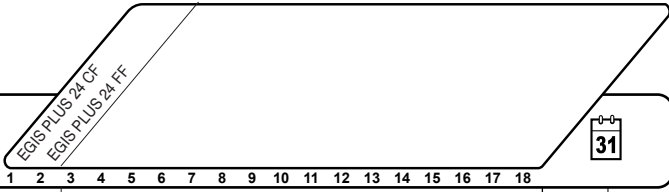


900



5000

- | | | |
|---|---|---|
| <p>5001
 Transf. gaz > GPL
 Conv. gas > GPL
 Trasn. gas > GPL
 Transf. gas > GPL</p> | <p>5002
 Transf. gaz > Nat
 Conv. gas > Nat
 Trasn. gas > Met
 Transf. gas > Met</p> | <p>5020
 Options
 Accessories
 Opzioni
 Accessorio</p> |
|---|---|---|



☉⇒	Description	Manf. Pt. N	Type	EGIS PLUS 24 CF EGIS PLUS 24 FF																	
				1	2	3	4	5	6	7	8	9	10	11	12	13	14	15	16	17	18
0800	ELECTRICAL BOX																				
0801	FUSE 250V 2A - TEMPORIZED	61003456		•	•																
0802	MODULE KIT (EEPROM)	65111766		•	•																
0806	PUSH	65104228		•	•																
0809	INSPECTION COVER	65104294		•	•																
0814	CONTROL PANEL	65104300		•	•																
0815	P.C.B. (MAIN)	60001605-02		•	•																
0816	PRINTED CIRCUIT BOARD (DISPLAY)	60001606		•	•																
0818	PUSH BUTTON	60001607		•	•																
0824	CONTROL PANEL COVER (REAR)	65104293		•	•																
0825	PRESSURE GAUGE	65104234		•	•																
0851	CONTROL PANEL	60001608		•	•																
0855	CABLE CLAMP	571562		•	•																
0856	CABLE CLAMP	65103377		•	•																
0880	EARTH WIRE	65104286		•	•																
	DISPLAY WIRING	60000746	/ CN02	•	•																
	FAN CABLE	65107270	/ CN03	•																	
	NTC - PRES. SENSOR - GAS VALVE CABLE	60000840	/ CN04	•	•																
	IONIZATION ELECTRODE CABLE	65104518	/ CN05	•	•																
	THREE WAY VALVE CABLE	65104523	/ CN09	•	•																
	PUMP 1V CABLE	65105081	/ CN10	•	•																
	FLOW METER CABLE	60000813	/ CN14	•	•																
	FEEDER 240V	60000993	/ CN20	•	•																
	NTC - OVERHEAT THER. - PRES SWITCH CABLE	60000814	/ CN22	•																	
	NTC PROBE - OVERHEAT THERMOSTAT CABLE	65104708	/ CN22	•																	
	ROOM THERMOSTAT CABLE	60001253	/ CN25	•	•																
0900	JIG PLATE & PIPE FITTING																				
0903	HOT WATER CONNECTION	60000891		•	•																
0904	GAS SERVICE TAP	60000898		•	•																
0905	COLD WATER TAP	60000895		•	•																
0906	WATER FLOW & RETURN SERVI. TAP	60000885		•	•																
0910	WALL HOOK	60000625		•	•																
0917	SHEET GASKET D: 24-17-1.5	60061855-19		•	•																
0939	SHEET GASKET D: 16.5-11-1.5	60061854-14		•	•																
5000	ACCESSORIES																				
5001	BURNER JET FULL KIT (LPG)	65106690		•	•																
5002	BURNER JET FULL KIT (NG)	65106691		•	•																

LIST OF THE ABBREVIATIONS

HW	: Hot water.
CW	: Cold water.
C	: Ceramic resistance (normal heating).
Ca	: Ceramic resistance (accelerated heating)
TP	: Immersion heater.
1F	: With fittings.
2F	: Without fittings.
3F	: With fittings and another outlet connection.
AMI	: With mixing valve.
SMI	: Without mixing valve.
PUISS	: Power of th appliance.
PN	: Appliance with normal pression.
LP	: Appliance with low pression.
PV	: Appliance with variable power.
PF	: Appliance with fixed power.

IDENTIFICATION PLATE

SERIAL NUMBER

10 Characters :

04 05 125 011
 Year of manufacture Manufacturing day Sequential number

11 Characters :

1 95 065004 - 31
 Month of manufacture : Technical number of the appliance
 from 1 to 9 → Jan. to Sep.,
 O → Oct., N → Nov.,
 D → Dec. Sequential number
 Year of manufacture

19 Characters :

08 05 0013199 900640031
 Year of manufacture Product reference
 Month of manufacture Sequential number

20 Characters :

3675007 XX 2 07 070 00315
 Product reference Sequential number
 Millenium of manufacture Manufacturing day
 Year of manufacture

21 Characters :

3675007 XX 07 070 0000315
 Product reference Sequential number
 Year of manufacture Manufacturing day