

Input data

System of measurement		Metric
Input type		Coupling for electric motor
Input speed	[rpm]	1400
Output speed	[rpm]	289.86
Ratio (i=)		4.83
Frequency	[Hz]	50
Input options		IEC
Requested input power	[kW]	7.5
Service factor		1.7
Rated Power P1	[kW]	12.64

Output data

Gear unit F RD 42 B3 V5 4.83 132 B5 AU 40x80

Type		RD - Helical gearboxes
Input type		F (Elastic coupling)
Size		42
Ratio (i=)		4.83
Input flange		B5
Mounting position		V5
Input speed	[rpm]	1400
Output speed	[rpm]	289.86
Rated output torque	[Nm]	237.22
Service Factor		1.7
Efficiency		0.96
Inertia moment	[kgm ²]	0.001081

Gear unit configuration

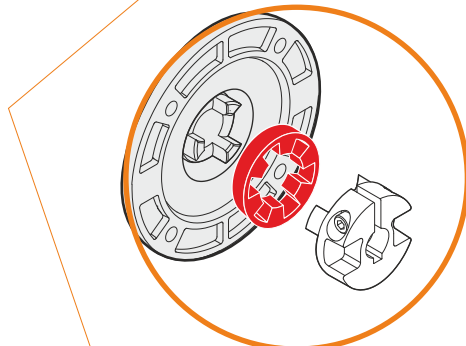
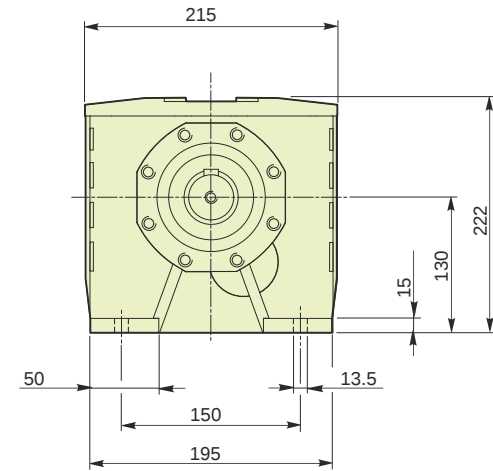
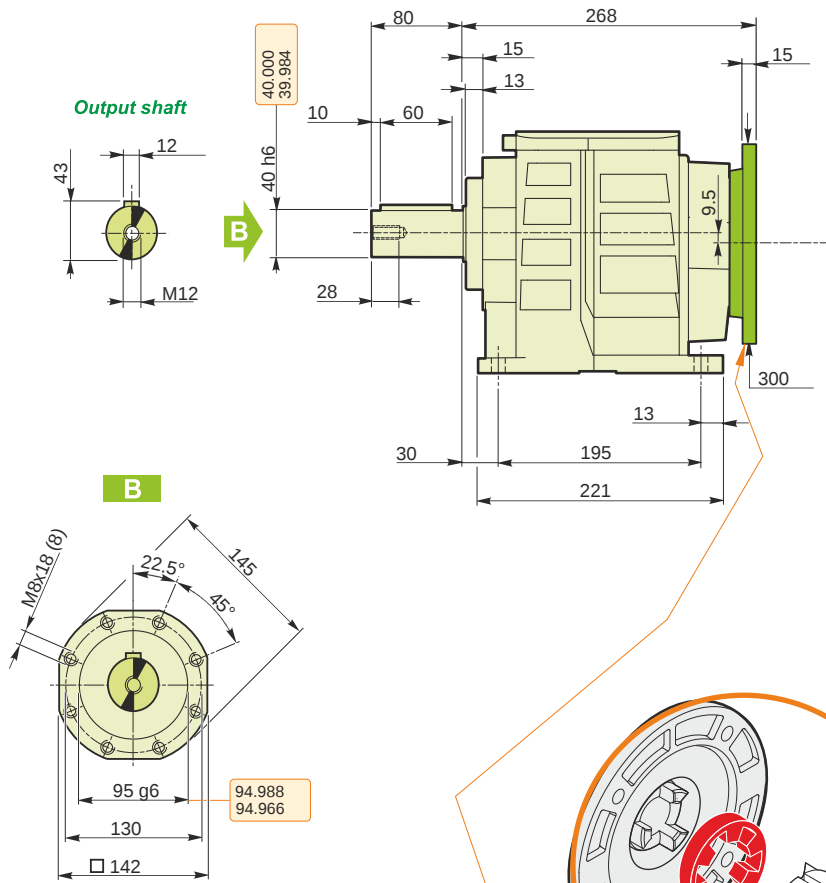
Fixing		Feet
Output shaft		AU 40x80

Output radial and axial loads

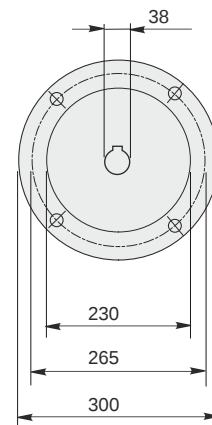
Output radial load	[N]	3000
Output axial load	[N]	600

Electric motor coupling

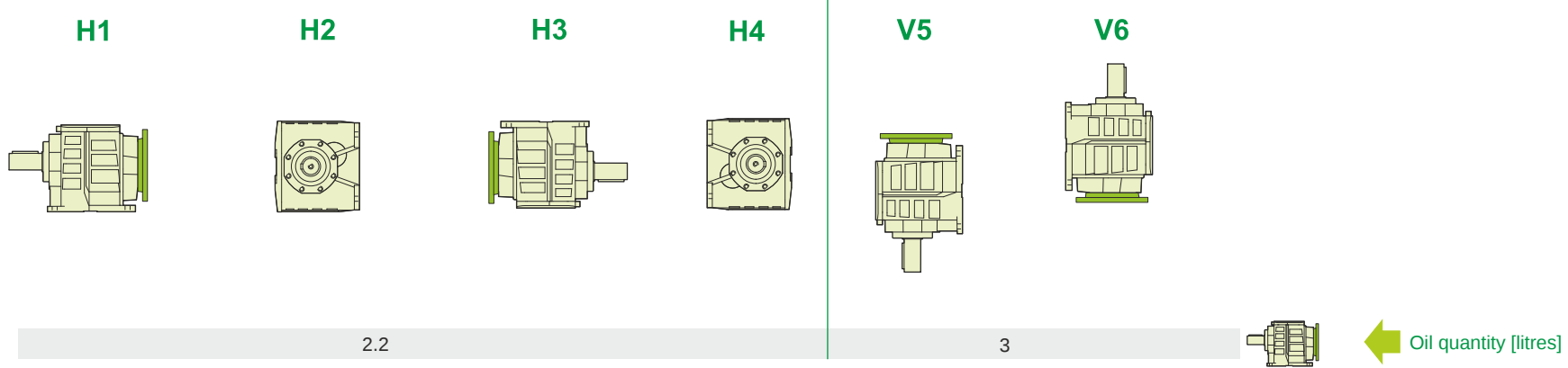
Size		132 M4
Poles n.		4
Power	[kW]	7.5



This gear unit is provided with an elastic coupling motor fitting (more info)



Mounting positions



Lubricant type: Long life synthetic oil ISO VG320

Direction of rotation

Weight

Gear unit [kg]

20

