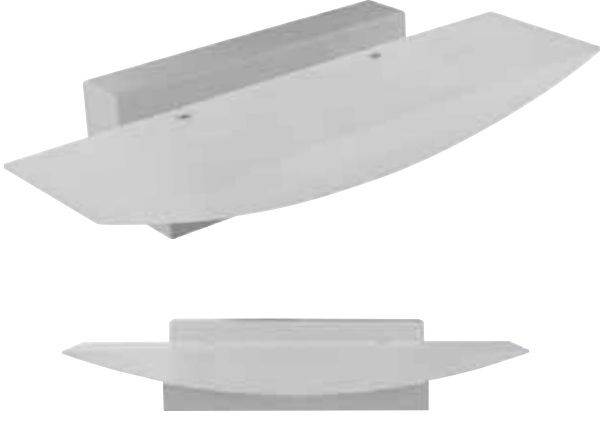


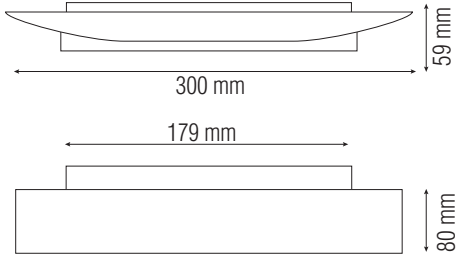
LED WALL LIGHT

Product&Family Code: **029 004 0006**

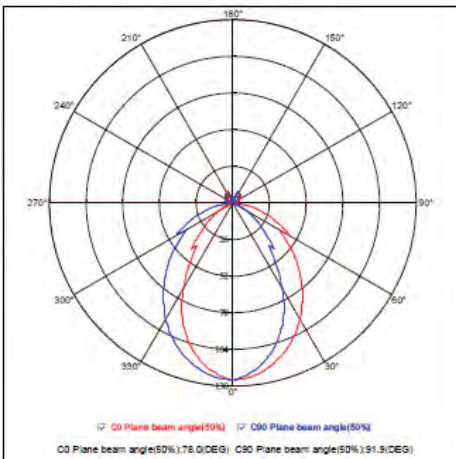
RODOS-6



Technical Drawing



Photometric Diagram



Technical Data	
Voltage (V)	85-265V
Product Wattage (W)	6
Equivalence with incandescent lamp(W)	48
Colour Render Index (Ra)	>Ra80
Colour Temperature (K)	4000
Materials	Acrylic
Protection Class	I
Dimmable	No
EEI	A to A++
Warm-up time up to 60 %of the full light output	Instant Full Light
Luminous Flux (lm)	340
Luminous Efficacy (lm/W)	56
Rated Life (hrs) ⌚	30.000
IP Rating	20
Power Factor	>0.5
Beam Angle	90°
Starting Time	<0.2s
Number of ON-OFF cycling	x15.000

Applications

- Styled bedroom, hallway, living room or dining area.



Features

- High Lumen and CRI, Good quality & Constant Current driver.
- High heat dissipation, low carbon and environmental protection.
- SMD LED Lamp Base.
- Very low energy consumption.

