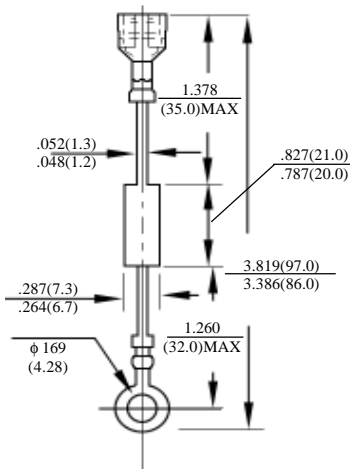


**HVM5 – HVM16**  
**HVP5 – HVP16**

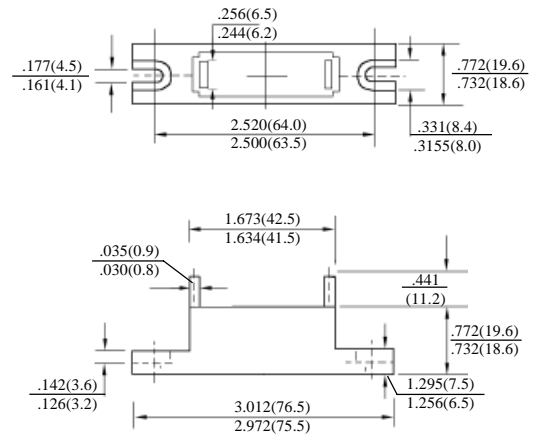
**高压二极管**  
**HIGH – VOLTAGE DIODES**

最大额定值、电性 MAXIMUM RATINGS AND ELECTRICAL CHARACTERISTICS  
 Ratings at 25°C ambient temperature unless otherwise specified. Single phase, half wave, 60Hz, resistive or inductive load. For capacitive load, derate current by 20%.

| 型号<br>TYPE                                                | 最大反向峰值电压<br>Maximum Peak Reverse Voltage                  | 最大平均正向电流<br>Maximum Average Forward Output Current @T <sub>A</sub> =60°C | 最大正向浪涌电流<br>Maximum Forward Peak Surge Current @ 8.3ms Superimposed | 最大正向峰值电压<br>Maximum DC Forward Voltage drop per element                | 最大反向电流<br>Maximum DC Reverse Current at rated DC Blocking Voltage per element |                  | 结温<br>Operating Junction Temperature | 外型尺寸<br>Package Dimensions |
|-----------------------------------------------------------|-----------------------------------------------------------|--------------------------------------------------------------------------|---------------------------------------------------------------------|------------------------------------------------------------------------|-------------------------------------------------------------------------------|------------------|--------------------------------------|----------------------------|
|                                                           | PRV                                                       | I <sub>O</sub>                                                           | I <sub>FM</sub> (Surge)                                             | V <sub>F</sub>                                                         | I <sub>R</sub>                                                                |                  | T <sub>J</sub>                       |                            |
|                                                           | V <sub>PK</sub>                                           | MA <sub>AV</sub>                                                         | A <sub>PK</sub>                                                     | V <sub>PK</sub>                                                        | 25°CCTA<br>μADC                                                               | 125°CCTA<br>μADC | °C                                   |                            |
| HVM5<br>HVM8<br>HVM10<br>HVM12<br>HVM14<br>HVM15<br>HVM16 | 5000<br>8000<br>10000<br>12000<br>14000<br>15000<br>16000 | 350                                                                      | 30                                                                  | at I <sub>F</sub> =0.35ADC<br>8.0<br>9.0<br>12<br>12<br>14<br>14<br>14 | 10                                                                            | 500              | 135                                  | HVM                        |
| HVP5<br>HVP8<br>HVP10<br>HVP12<br>HVP14<br>HVP15<br>HVP16 | 5000<br>8000<br>10000<br>12000<br>14000<br>15000<br>16000 | 750                                                                      | 50                                                                  | at I <sub>F</sub> =0.75ADC<br>8.0<br>9.0<br>12<br>12<br>14<br>14<br>14 | 10                                                                            | 500              | 130                                  | HVP                        |



HVM



HVP

HVM5-HVM16 HVP5-HVP16

高压二极管额定值与特性曲线

RATING & CHARACTERISTIC CURVES OF HIGH-VOLTAGE DIODES

FIG. 1 - CURRENT DERATING

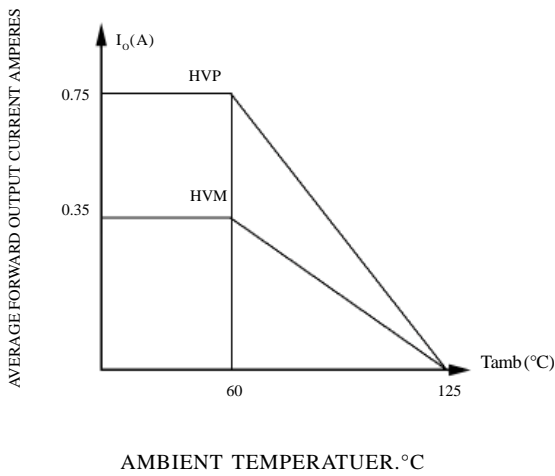


FIG. 2 - MAXIMUM NON-REPETITIVE PEAK FORWARD SURGE CURRENT

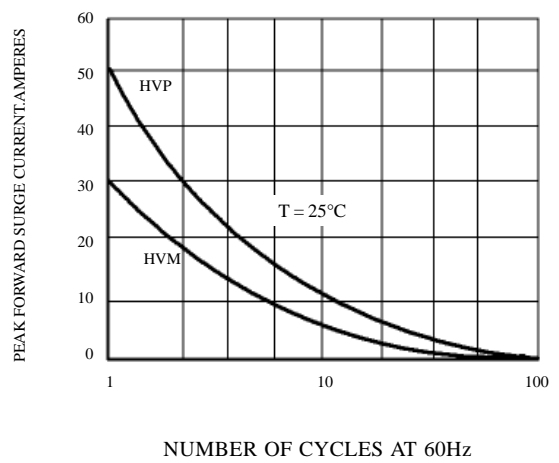


FIG. 4 - TYPICAL FORWARD CHARACTERISTICS

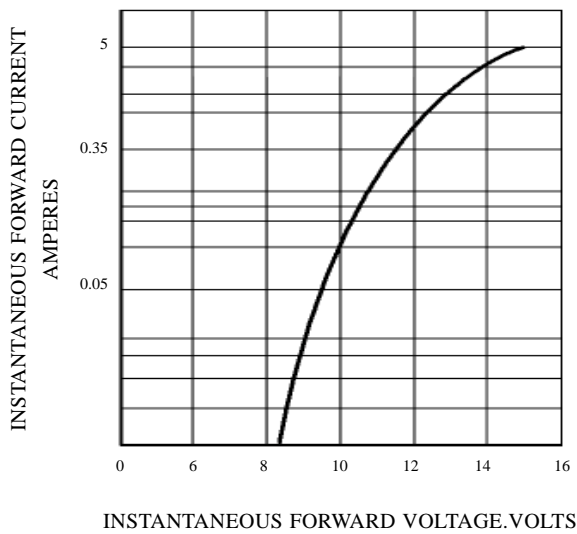


FIG. 3 - TYPICAL REVERSE CHARACTERISTICS

