

### CARATTERISTICHE SPECIFICATIONS

ATTACCHI PIPES in → out	Ø mm	CODICE CODE	KV m <sup>3</sup> /h	M.O.P.D. bar		DIMENSIONI/DIMENSIONS mm				PESO/WEIGHT Kg
				AC	DC	A	B	C	D	
G 1/4	10	8512	1.86	10	10	61	73	48	60	0.500
G 3/8	12	8513	1.86	10	10	61	73	48	60	0.450
G 1/2	12	8514	2.10	10	10	61	73	48	60	0.400
3/8 NPT	12	8523	1.86	10	10	61	73	48	60	0.450
1/2 NPT	12	8524	2.10	10	10	69	73	48	60	0.410

### CARATTERISTICHE ELETTRICHE ELECTRICAL INFORMATION

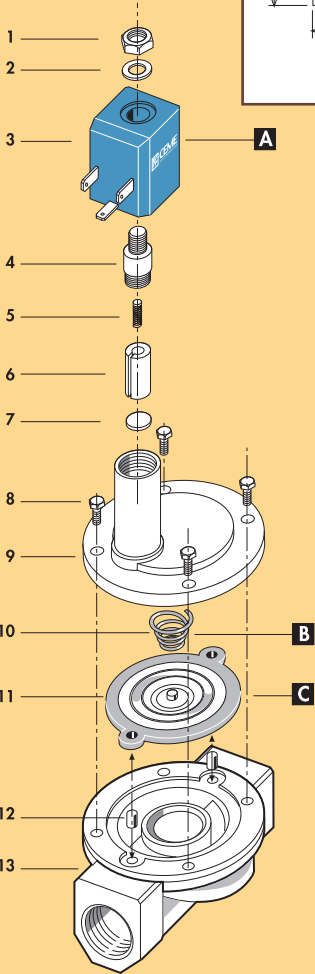
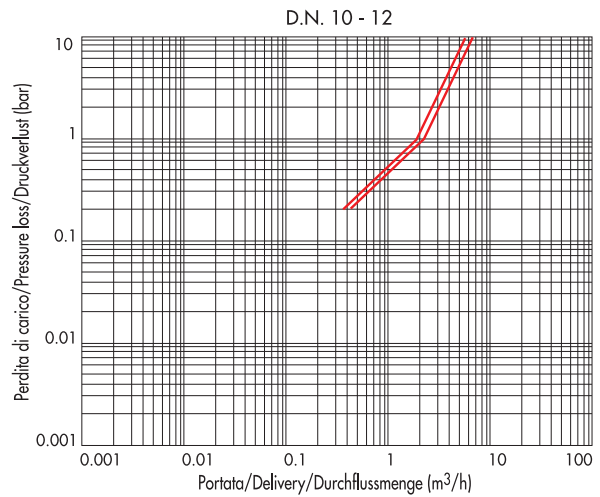
					POTENZA/POWER						
	NOMINALE HOLDING		SPUNTO IN RUSH								
V~	12	24	48	110	230	400	50	60	Hz	11VA	14,5VA
V=	12	24	48	110						9W	

Per dettagli costruttivi sulle bobine vedi capitolo "INFORMAZIONI DI PROGETTO"  
For construction details of the coil see chapter "PROJECT INFORMATION"  
Ausführliche Daten über die Ventilspulnen finden Sie unter Abschnitt "TECHNISCHE INFORMATIONEN"

### MAX TEMPERATURA MAX TEMPERATURE

FLUIDI/FLUIDS				AMBIENTE/AMBIENT
NBR	EPDM	EPDM/KTW	FPM	80°C
90°C	130°C	130°C	150°C	

### DIAGRAMMA PERDITA DI CARICO PRESSURE LOSS DIAGRAM



1 Dado	Lock nut	Mutter
2 Rondella	Washer	Beilagscheibe
3 Bobina	Coil	Magnetspule
4 Nucleo fisso	Tube top	Kern
5 Molla	Spring	Feder
6 Nucleo mobile	Plunger	Plunger
7 Pastiglia	Seal	Dichtung
8 Vite	Screw	Schraube
9 Coperchio	Valve body top	Deckel
10 Molla	Spring	Feder
11 Membrana	Diaphragm	Membrane
12 Bussola	Bush	Buchse
13 Corpo	Valve body base	Grundkörper

RICAMBI	SPARE PARTS	ERSATZTEILE
<b>A</b> Bobina	Coil	Magnetspule
<b>B</b> Molla	Spring	Feder
<b>C</b> Membrana	Diaphragm	Membrane



**ELETTROVALVOLA SERVOCOMANDATA 2/2 VIE N.C.**  
**SOLENOID VALVE PILOT OPERATED 2/2 WAY N.C.**  
**SERVOGESTEUERTES MAGNETVENTIL 2/2 WEGE S.G.**



**I CARATTERISTICHE GENERALI**  
**PRESSIONE MINIMA DIFFERENZIALE DI FUNZIONAMENTO** 0,25 bar  
**PARTI A CONTATTO CON IL FLUIDO**

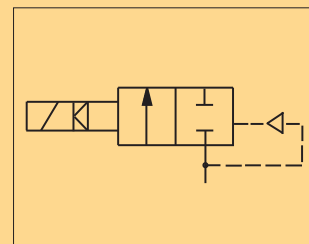
<b>TENUTA</b>	NBR a richiesta FPM - EPDM EPDM-KTW tenuta adatta e certificata DVGW per l'intercettazione di acqua potabile.
<b>CORPO</b>	OTTONE
<b>ORGANI INTERNI</b>	ACCIAIO INOX
<b>FLUIDI</b>	ARIA - ACQUA - OLII LEGGERI
<b>VALVOLA UNIDIREZIONALE</b>	
<b>VALVOLA ISPEZIONABILE</b>	
<b>VALVOLA FORNITA CON</b>	CONNETTORE TRIPOLARE UNI ISO 6952 (DIN 43650B)- IP65.
<b>POSIZIONE DI MONTAGGIO</b>	Qualsiasi; sconsigliata quella con bobina rivolta verso il basso.
<b>TEMPERATURA AMBIENTE</b>	80°C, in D.C. per temperature superiori a 40°C, le performance (M.O.P.D.) potrebbero diminuire.

- ESECUZIONI SPECIALI**
- VERSIONE ANTI COLPO D'ARIETE CON TEMPO DI CHIUSURA PIU' LENTO.
  - VERSIONE CON OMOLOGAZIONE KTW.

**UK GENERAL FEATURES**  
**MINIMUM DIFFERENTIAL WORKING PRESSURE** 0,25 bar  
**PARTS IN CONTACT WITH THE FLUID**

<b>SEALING</b>	NBR on request FPM - EPDM EPDM-KTW sealing approved and DVGW certified for interception of potable water
<b>BODY</b>	BRASS
<b>INTERNAL PARTS</b>	STAINLESS STEEL
<b>FLUIDS</b>	AIR - WATER - LIGHT OILS
<b>ONE WAY DIRECTION VALVE</b>	
<b>SERVICEABLE VALVE</b>	
<b>VALVE SUPPLIED WITH</b>	THREE POLE PLUG CONNECTOR UNI ISO 6952 (DIN 43650B)-IP65
<b>MOUNTING POSITION</b>	Any, the position with the coil downwards is not recommended.
<b>AMBIENT TEMPERATURE</b>	80°C, in D.C. for temperatures higher than 40°C, the performances (M.O.P.D.) could decrease.

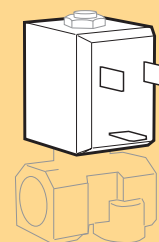
- SPECIAL EXECUTIONS**
- VERSION WITH WATER HAMMER DEVICE FOR SLOWER CLOSING TIME.
  - VERSION WITH KTW HOMOLOGATION.



**D ALLGEMEINE MERKMALE**  
**MINIMALER DIFFERENTIALARBEITSDRUCK** 0,25 bar  
**MEDIUMS BERUEHRTE TEILE**

<b>DICHTUNG</b>	NBR auf Nachfrage FPM - EPDM EPDM-KTW Dichtung DVGW-KTW zertifiziert fuer den Trinkwassereinsatz.
<b>KOERPER</b>	MESSING
<b>INNERE ELEMENTE</b>	EDELSTAHL
<b>MEDIEN</b>	LUFT - WASSER - LEICHTE OELE
<b>UNIDIREKTIONALES VENTIL</b>	
<b>VENTIL WARTUNGSFREUNDLICH</b>	
<b>LIEFERUMFANG</b>	DREIPOLIGER STECKER UNI ISO 6952 (DIN 43650B) -IP65
<b>MONTAGEPOSITION</b>	Keine Einschränkungen. Fuer Montage mit dem Spulenkopf senkrecht nach unten, auf Anfrage.
<b>UMGEBUNGSTEMPERATUR</b>	80°C, im D.C.- Betrieb koennen Temperaturen ueber 40°C, die Schaltkrafte (M.O.P.D.) des Ventils beeintraechtigen.

- SONDERAUSFUEHRUNGEN**
- VERSION LANGSAM SCHLIESSEND.
  - VERSION MIT HOMOLOGATION KTW.



**BOBINA TIPO B4**  
**COIL TYPE B4**  
**SPULE TYP B4**