

CARATTERISTICHE SPECIFICATIONS

| ATTACCHI PIPES in → out | Ø mm | CODICE CODE | KV m ³ /h | M.O.P.D. bar | | DIMENSIONI/DIMENSIONS mm | | | | PESO/WEIGHT Kg |
|-------------------------------|---------|----------------|-------------------------|-----------------|----|-----------------------------|-----|-----|-----|-------------------|
| | | | | AC | DC | A | B | C | D | |
| G 3/8 | 12 | 8613 | 2.10 | 10 | 10 | 61 | 89 | 48 | 77 | 0.540 |
| G 1/2 | 12 | 8614 | 2.10 | 10 | 10 | 61 | 89 | 48 | 77 | 0.500 |
| G 3/4 | 20 | 8615 | 5.70 | 10 | 10 | 87 | 101 | 69 | 84 | 0.800 |
| G 1 | 25 | 8616 | 9.60 | 10 | 10 | 100 | 106 | 80 | 86 | 1.100 |
| G 1 1/4 | 32 | 8617 | 22.00 | 10 | 10 | 131 | 122 | 112 | 95 | 2.500 |
| G 1 1/2 | 39 | 8618 | 27.00 | 10 | 10 | 146 | 128 | 128 | 98 | 3.000 |
| G 2 | 51 | 8619 | 35.00 | 10 | 10 | 174 | 145 | 146 | 108 | 4.600 |
| G 2 1/2 | 65 | 8620 | 63.00 | 10 | 10 | 245 | 180 | 184 | 134 | 9.400 |
| G 3 | 75 | 8621 | 83.00 | 10 | 10 | 250 | 190 | 184 | 139 | 11.230 |
| 3/8 NPT | 12 | 8623 | 2.10 | 10 | 10 | 61 | 89 | 48 | 77 | 0.540 |
| 1/2 NPT | 12 | 8624 | 2.10 | 10 | 10 | 69 | 89 | 48 | 77 | 0.510 |
| 3/4 NPT | 20 | 8625 | 5.70 | 10 | 10 | 87 | 101 | 69 | 84 | 0.800 |
| 1 NPT | 25 | 8626 | 9.60 | 10 | 10 | 108 | 106 | 80 | 86 | 1.130 |

CARATTERISTICHE ELETTRICHE ELECTRICAL INFORMATION

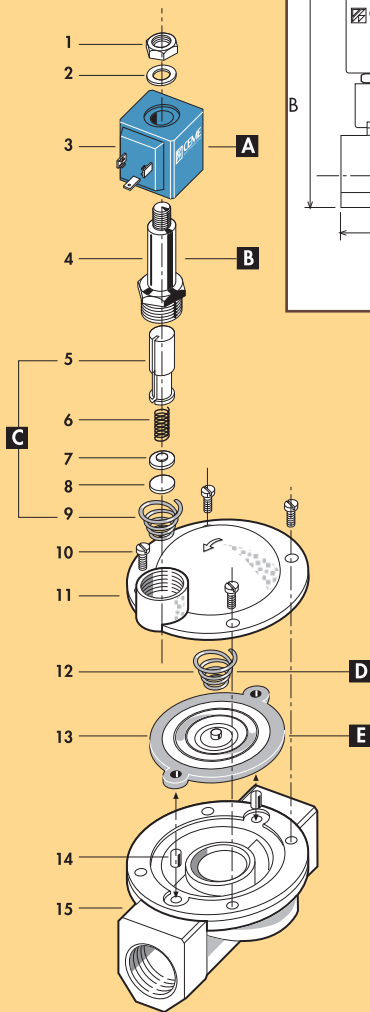
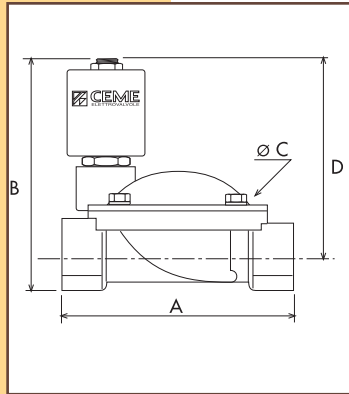
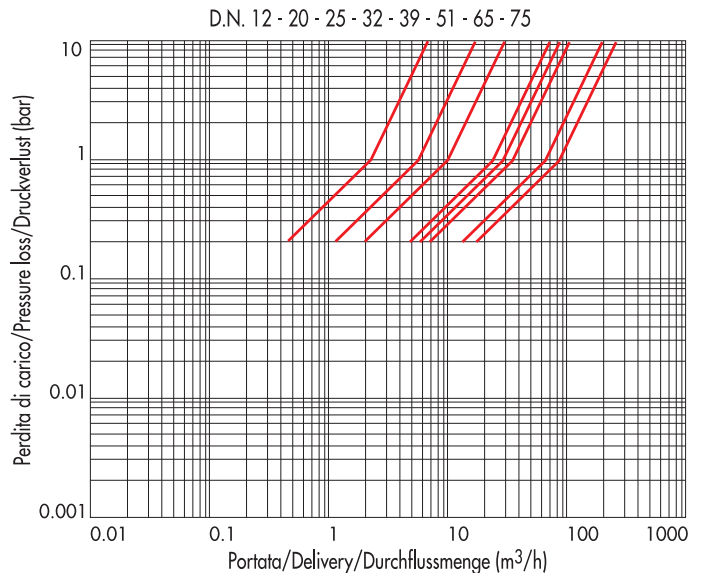
| | | | | | | | POTENZA/POWER | | | | |
|----|----|----|----|-----|-----|-----|---------------------|-------------------|----|------|------|
| | | | | | | | NOMINALE HOLDING | SPUNTO IN RUSH | | | |
| V~ | 12 | 24 | 48 | 110 | 230 | 400 | 50 | 60 | Hz | 11VA | 24VA |
| V= | 12 | 24 | 48 | 110 | | | | | | | 16W |

Per dettagli costruttivi sulle bobine vedi capitolo "INFORMAZIONI DI PROGETTO"
For construction details of the coils see chapter "PROJECT INFORMATION"
Ausführliche Daten über die Ventilspulen finden Sie unter Abschnitt "TECHNISCHE
INFORMATIONEN"

MAX TEMPERATURA MAX TEMPERATURE

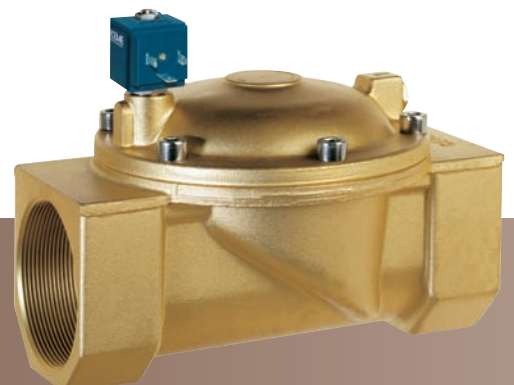
| FLUIDI/FLUIDS | | | | AMBIENTE/AMBIENT |
|---------------|-------|----------|-------|------------------|
| NBR | EPDM | EPDM-KTW | FPM | 80°C |
| 90°C | 130°C | 130°C | 150°C | |

DIAGRAMMA PERDITA DI CARICO PRESSURE LOSS DIAGRAM



| | | |
|-----------------|-----------------|---------------|
| 1 Dado | Lock nut | Mutter |
| 2 Rondella | Washer | Beilagscheibe |
| 3 Bobina | Coil | Magnetspule |
| 4 Cannoito | Tube guide | Plungerrohr |
| 5 Nucleo mobile | Plunger | Plunger |
| 6 Molla | Spring | Feder |
| 7 Piattello | Support | Scheibe |
| 8 Pastiglia | Seal | Dichtung |
| 9 Molla | Spring | Feder |
| 10 Vite | Screw | Schraube |
| 11 Coperchio | Valve body top | Deckel |
| 12 Molla | Spring | Feder |
| 13 Membrana | Diaphragm | Membrane |
| 14 Bussola | Bush | Buchse |
| 15 Corpo | Valve body base | Grundkörper |

| RICAMBI | SPARE PARTS | ERSATZTEILE |
|------------------------|-------------|-------------|
| A Bobina | Coil | Magnetspule |
| B Cannoito | Tube guide | Plungerrohr |
| C Nucleo mobile | Plunger | Plunger |
| D Molla | Spring | Feder |
| E Membrana | Diaphragm | Membrane |



**ELETTROVALVOLA SERVOCOMANDATA 2/2 VIE N.C.
SOLENOID VALVE PILOT OPERATED 2/2 WAY N.C.
SERVOGESTEUERTES MAGNETVENTIL 2/2 WEGE S.G.**



KTW

I CARATTERISTICHE GENERALI
PRESSIONE MINIMA DIFFERENZIALE DI FUNZIONAMENTO 0,3 bar
PARTI A CONTATTO CON IL FLUIDO

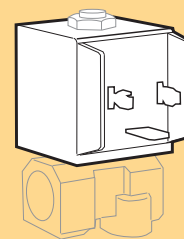
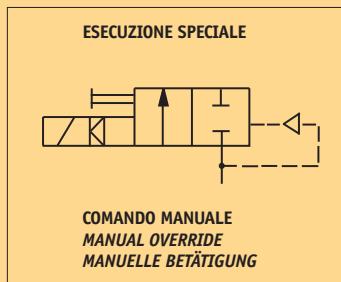
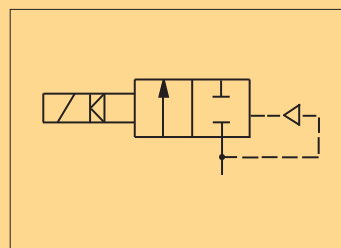
- TENUTA** NBR a richiesta FPM - EPDM
EPDM-KTW tenuta adatta e certificata DVGW per l'intercettazione di acqua potabile.
- CORPO** OTTONE
- TUBO GUIDA INOX** - Tenuta metallica con il corpo per tenute sicure anche ad alte temperature di impiego.
- Migliore resistenza alla corrosione.
- ORGANI INTERNI** ACCIAIO INOX
- FLUIDI** ARIA, ACQUA, OLII LEGGERI
- VALVOLA UNIDIREZIONALE** CONNETTORE TRIPOLARE UNI ISO 4400 (DIN 43650A) - IP65.
Qualsiasi; sconsigliata quella con bobina rivolta verso il basso.
- VALVOLA ISPEZIONABILE** 80°C in D.C. per temperature superiori a 40°C, le performance (M.O.P.D.) potrebbero diminuire
- VALVOLA FORNITA CON** - VERSIONE ANTI COLPO D'ARIETE CON TEMPO DI CHIUSURA PIÙ LENTO.
- POSIZIONE DI MONTAGGIO** - VERSIONE CON COMANDO MANUALE APERTURA/CHIUSURA (DISPONIBILE PER I MODELLI 8616 - 8617 - 8618 - 8619 - 8620 - 8621).
- TEMPERATURA AMBIENTE** - VERSIONE CON MEMBRANA RINFORZATA PER UTILIZZO AD ALTA FREQUENZA D'INTERVENTO (DISPONIBILE PER I MODELLI 8615 - 8616 - 8617 - 8618 - 8619).
- ESECUZIONI SPECIALI** - VERSIONE CON OMOLOGAZIONE KTW.

UK GENERAL FEATURES
MINIMUM DIFFERENTIAL WORKING PRESSURE 0,3 bar
PARTS IN CONTACT WITH THE FLUID

- SEALING** NBR on request FPM - EPDM
EPDM-KTW sealing approved and DVGW certified for interception of potable water
- BODY** BRASS
- STAINLESS STEEL TUBE GUIDE** - Metallic sealing with the body for safety sealing also for high temperature applications.
- Improved corrosion resistance.
- INTERNAL PARTS** STAINLESS STEEL
- FLUIDS** AIR, WATER, LIGHT OILS
- ONE WAY DIRECTION VALVE** THREE POLE PLUG CONNECTOR UNI ISO 4400(DIN 43650A) -IP65
- SERVICEABLE VALVE** Any, the position with the coil downwards is not recommended.
- VALVE SUPPLIED WITH** 80°C in D.C. for temperatures higher than 40°C, the performances (M.O.P.D.) could decrease.
- MOUNTING POSITION** - VERSION WITH WATER HAMMER DEVICE FOR SLOWER CLOSING TIME.
- AMBIENT TEMPERATURE** - VERSION WITH MANUAL OVERRIDE (AVAILABLE FOR MODELS 8616-8617-8618-8619-8620 8621).
- SPECIAL EXECUTIONS** - VERSION WITH REINFORCED DIAPHRAGM FOR HIGH FREQUENCY APPLICATIONS (AVAILABLE FOR MODELS 8615-8616-8617-8618-8619).
- VERSION WITH KTW HOMOLOGATION.

D ALLGEMEINE MERKMALE
MINIMALER DIFFERENTIALARBEITSDRUCK 0,3 bar
MEDIUMS BERUEHRTE TEILE

- DICHTUNG** NBR auf Nachfrage FPM - EPDM
EPDM-KTW Dichtung, DVGW-KTW zertifiziert fuer den Trinkwassereinsatz.
- KOERPER** MESSING
- PLUNGERROHR AUS EDELSTAHL** - Metallische Dichtung fuer einen sicheren Einsatz auch bei hohen Medien-temperaturen.
- Bessere Korrosionsbestaendigkeit.
- INNERE ELEMENTE** EDELSTAHL
- MEDIEN** LUFT, WASSER, LEICHTE OELE
- UNIDIREKTIONALES VENTIL**
- VENTIL WARTUNGSFREUNDLICH**
- LIEFERUMFANG** DREIPOLIGER STECKER UNI ISO 4400 (DIN 43650A) -IP65
- MOUNTING POSITION** Keine Einschränkungen. Fuer Montage mit dem Spulenkopf senkrecht nach unten, auf Anfrage.
- UMGEBUNGSTEMPERATUR** 80°C ,im D.C- Betrieb koennen Temperaturen ueber 40°C, die Schaltkrafte (M.O.P.D.) des Ventils beeintraechtigen.
- SONDERAUSFUEHRUNGEN** - VERSION LANGSAM SCHLIESSEND.
- VERSION MIT HANDBETAETIGUNG (VERFUEGBAR FUER MODELLE 8616-8617-8618-8619-8620-8621).
- VERSION MIT VERSTAERKTER MEMBRANE FUER DEN EINSATZ MIT HOHER SCHALTHAEUFIGKEIT (VERFUEGBAR FUER MODELLE 8615-8616-8617-8618-8619).
- VERSION MIT HOMOLOGATION KTW



**BOBINA TIPO B6
COIL TYPE B6
SPULE TYP B6**