

ROCCO

ROCCO



# Rococò®

*Antico Veneziano*



*Stefano Sarti*



*L'Arte dello Stucco Veneziano nella sua enfatica Bellezza  
racchiude in sé la Spiritualità e la Concretezza della Decorazione*







Rif. 2  
438 A

STUCCO VENEZIANO 500 ALLA CALCE

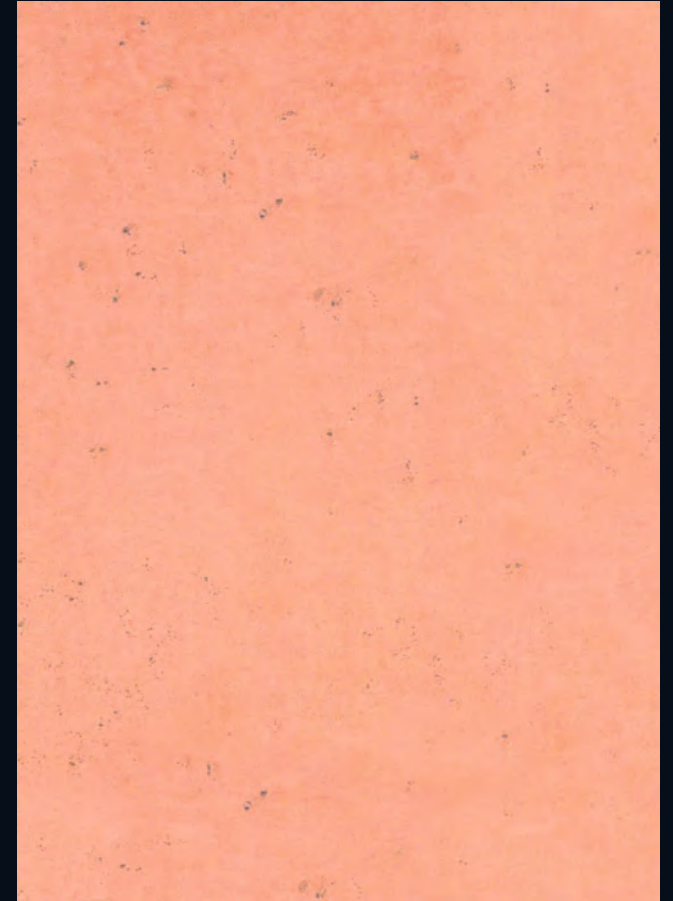
RESA:  
3 - 4 mq./LT.



Rif. 5  
452 C

GRASSELLO DI CALCE

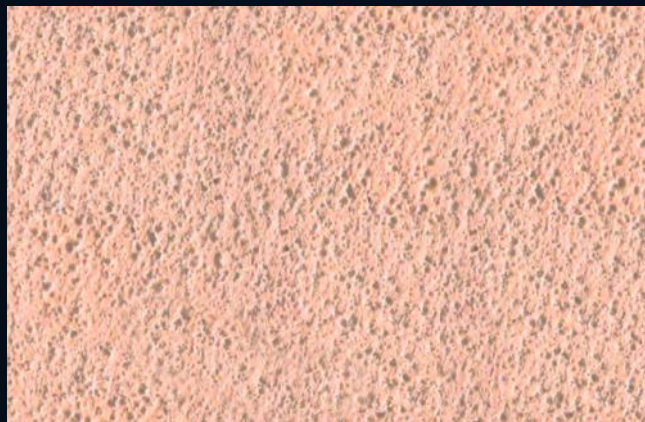
RESA:  
2 - 3 mq./LT.



Rif. 6  
438 C

MARMORINO

RESA:  
0,8 - 1 mq./LT.



Rif. 9  
438 D

INTONACHINO MINERALE

RESA:  
0,6 - 0,7 mq./LT.

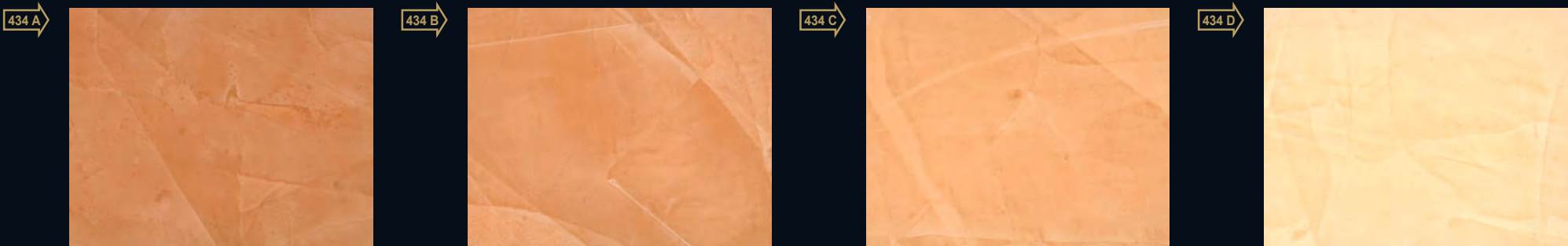
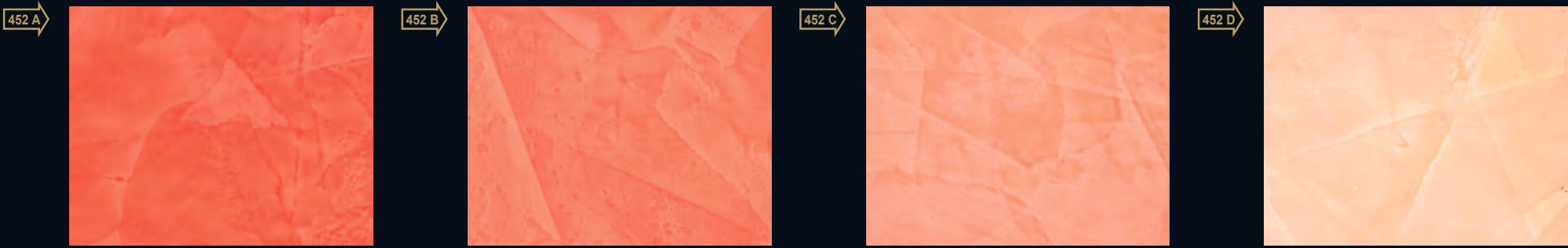


Rif. 10  
438 D

PITTURA ANTICA CALCE

RESA:  
4 - 5 mq./LT.

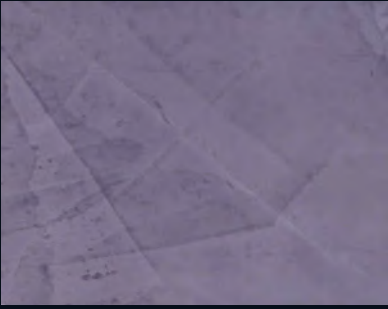








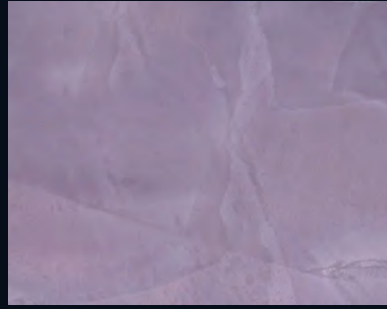
445 A



445 B



445 C



445 D



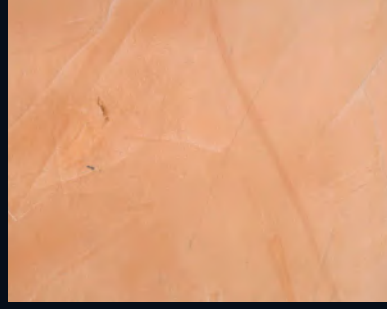
430 A



430 B



430 C



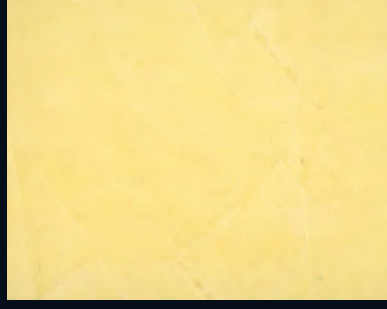
430 D



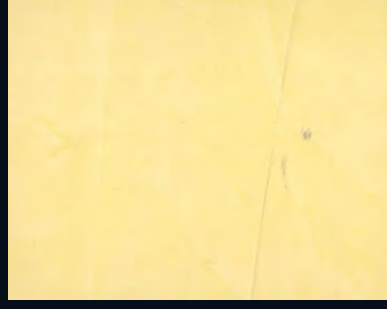
432 A



432 B



432 C



432 D



446 A



446 B



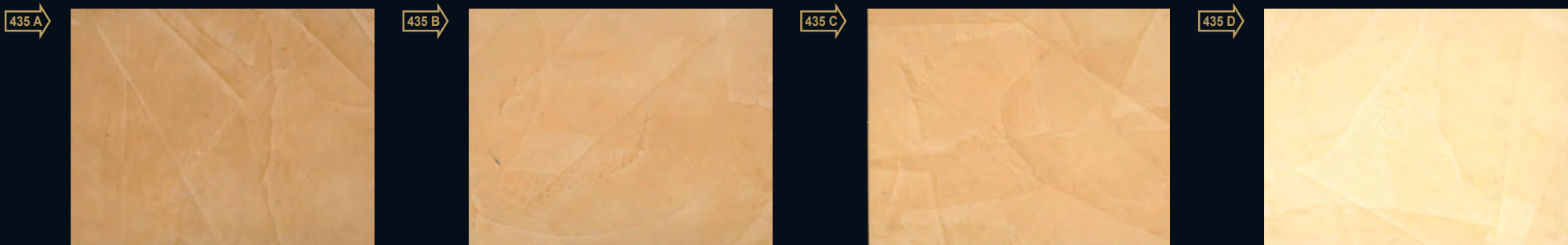
446 C



446 D









453 A



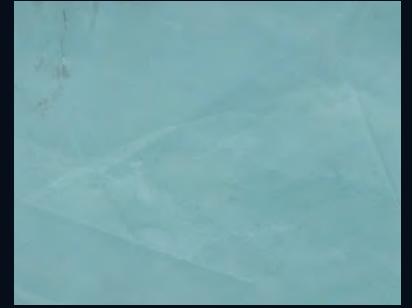
453 B



453 C



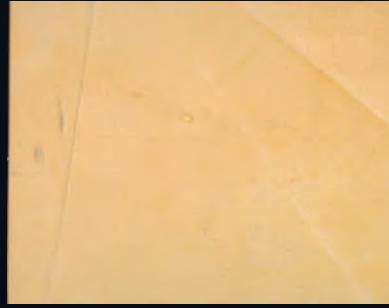
453 D



431 A



431 B



431 C



431 D



443 A



443 B



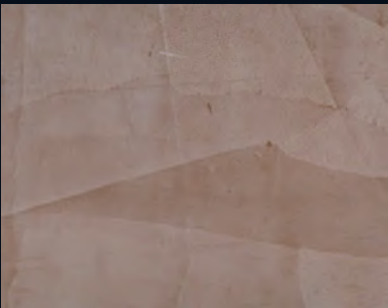
443 C



443 D



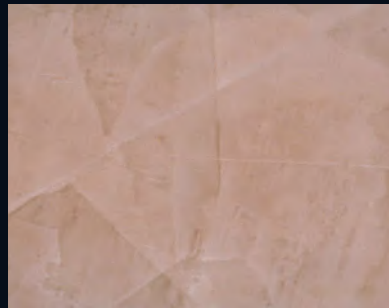
450 A



450 B



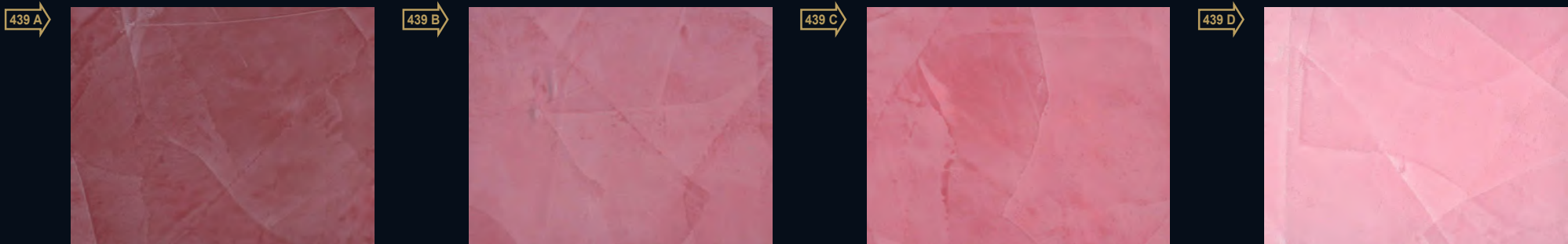
450 C



450 D

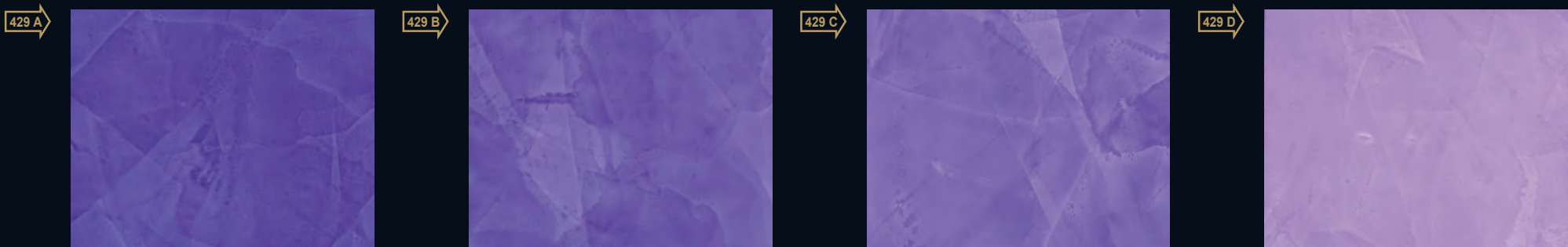
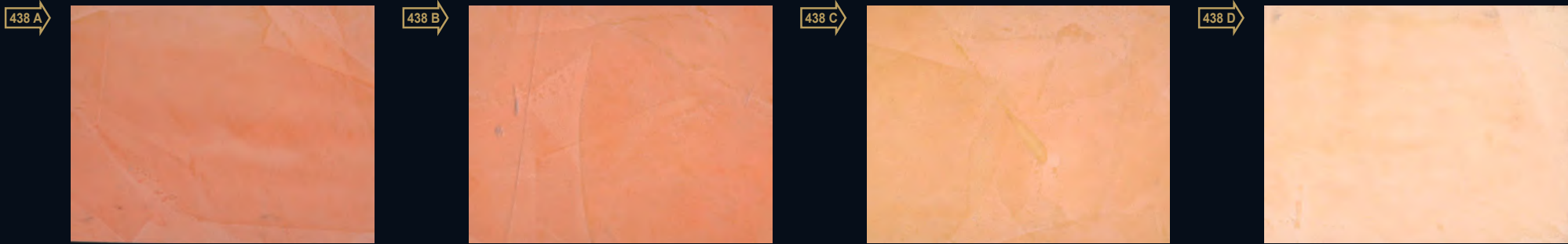




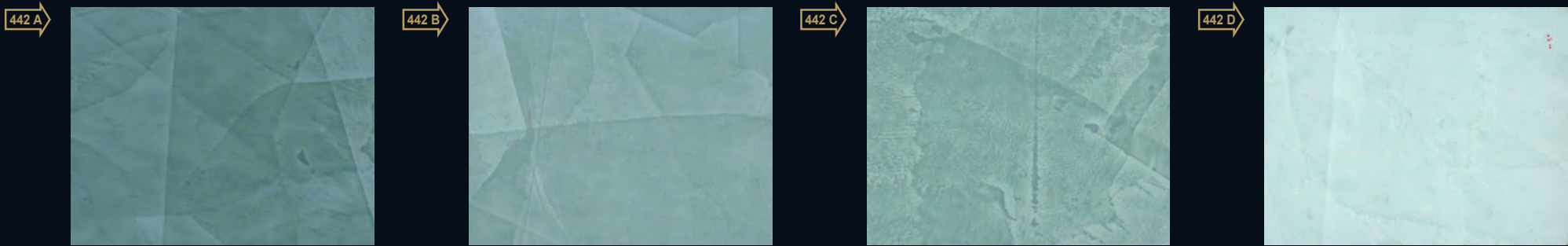
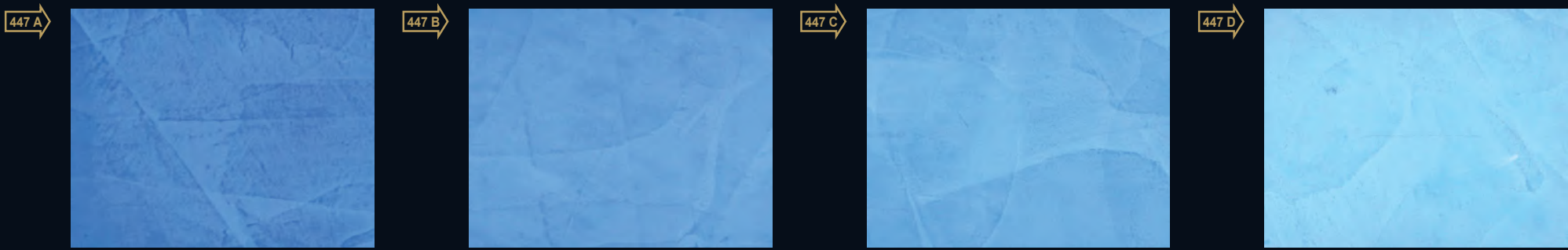
















The ROCOCO RANGE includes a series of coatings with high strength, good colour stability over time and a high level of transpiration which make them particularly suitable for decorating surfaces of significant artistic and historical importance. The ROCOCO RANGE is made up of: STUCCO VENEZIANO, STUCCO VENEZIANO ALLA CALCE, GRASSELLO DI CALCE, MARMORINO, INTONACHINO MINERALE and PITTURA ANTICA CALCE. All the products in the ROCOCO RANGE are suitable for decorating interiors. All except MARMORINO, INTONACHINO MINERALE and PITTURA ANTICA CALCE can also be used externally. Special decorative effects can be obtained using products in the ROCOCO RANGE, such as: Classic or Antique Venetian Stucco effect, Veined or Antique Marble effect, Flowered effect, Rustic effect and many others, depending on the imagination of the person applying the product.

**CHARACTERISTICS:** PRIMER 200 and all the products in the ROCOCO RANGE are available in white. To obtain the colours in the chart, simply add the appropriate quantity of COLORI' colouring paste as described under each example. COLORI' is supplied in suitable measuring packs of 80 and 480 ML. (accurately graduated) which allow the correct quantity of product to be dispensed to make the chosen colour. Alternatively, a paint-mixing machine may be used to perform the colouration. To guarantee the final result and to facilitate application, we recommend colouring products in the ROCOCO RANGE the day before use. All the products in the ROCOCO RANGE are ready for use, with the exception of PITTURA ANTICA CALCE, which should be diluted with 20 - 30% water.

**INSTRUCTIONS FOR USE:** All the products in the ROCOCO RANGE must always be applied over their own base coat, PRIMER 200, whether on old or new surfaces.

Where there is an existing layer of paint, make sure that it is well anchored to the surface. If not, or if the surface is dusty, remove all the existing paint completely, sand the surface and wash with water and suitable soap. When the surface is dry, apply one coat of PRIMER 200 using a wool roller or a brush and after approximately 8 hours at a temperature of 20°C, begin the application cycle for the chosen product in the ROCOCO RANGE. Coverage of PRIMER 200: approx. 1 litre per 5 - 6 square metres.

**APPLICATION: STUCCO VENEZIANO 800 CLASSICO and ANTICO, STUCCO VENEZIANO 500 ALLA CALCE CLASSICO and ANTICO (Ref. 1 Col. 452 A - Ref. 2 Col. 438 A)** - Spread the STUCCO VENEZIANO 800 or the STUCCO VENEZIANO 500 ALLA CALCE with a PV 43, PV 44 or PV 45 stainless trowel, leaving a thickness of product of about 1 mm on the surface and leaving the finish smooth and compact. After about 8 hours at 20°C, sand down thoroughly and proceed with spreading STUCCO VENEZIANO 800 or STUCCO VENEZIANO 500 ALLA CALCE with spatula strokes at will. To obtain the Classic effect, use a stainless spatula of approx. 6 - 8 cm (PV 39 - PV 40), and for the Antique effect, use a PV 43, PV 44 or PV 45 stainless trowel of whatever size, depending on what final result you wish to achieve. For the Classic effect, apply the product, with the stainless spatula, using irregular strokes 2 - 4 cm long spaced 2 - 3 cm apart, spreading the material horizontally or vertically and using the same spatula to remove the product in the opposite direction from the direction used when spreading it, on the entire surface to be treated. To obtain the Antique effect, effect, apply the product, with the stainless spatula, using irregular strokes 8 - 12 cm long spaced 2 - 3 cm apart and using the same application technique as described above for the Classic effect. After about an hour at 20°C, for both the Classic and Antique effects, start again from the beginning of the surface decorated with the first coat, applying strokes as described above, but covering the surface, in such a way that each stroke partly overlaps strokes already applied, so as to achieve an opaque Classic or Antique finish. Coverage: on a smooth surface, approx. 1 litre per 2 - 3 square metres.

**STUCCO VENEZIANO 800 with Veined effect - STUCCO VENEZIANO 500 ALLA CALCE with Veined effect (Ref. 3 Col. 452 B)** - Spread the STUCCO VENEZIANO 800 or the STUCCO VENEZIANO 500 ALLA CALCE with a PV 43, PV 44 or PV 45 stainless trowel, leaving a thickness of product of about 2 mm on the wall, over a surface of 2 - 3 square metres, in vertical strips working from top to bottom. While the product is still wet, go over the surface with the special PV 84 spatula (PV 85 for hard-to-reach areas), with long, wavy strokes, in a vertical, horizontal or diagonal direction, depending on the effect you wish to achieve. After about 8 hours at 20°C, sand lightly to remove any excessively obvious lumps or high points. Next, dilute the STUCCO VENEZIANO 800 or the STUCCO VENEZIANO 500 ALLA CALCE with 5% of VALIS and apply a thin layer at a time with long strokes, following the direction of the veining previously created, until a smooth, veined surface is obtained. This is the way to achieve the Semitransparent Veined Marble effect. Coverage: on a smooth surface, approx. 1 litre per 1 - 2 square metres.

**STUCCO VENEZIANO 800 with Flowered effect - STUCCO VENEZIANO 500 ALLA CALCE with Flowered effect (Ref. 4 Col. 438 B)** - Spread the STUCCO VENEZIANO 800 or the STUCCO VENEZIANO 500 ALLA CALCE with a PV 43, PV 44 or PV 45 stainless trowel, leaving a thickness of product of about 2 mm on the wall, over a surface of 2 - 3 square metres, in vertical strips working from top to bottom. While the product is still wet, go over the surface with the special PV 84 spatula (PV 85 for hard-to-reach areas), with closely-packed circular strokes until a uniform Flowered effect is obtained. After about 8 hours at 20°C, sand lightly to remove any excessively obvious lumps or high points. Next, dilute the STUCCO VENEZIANO 800 or the STUCCO VENEZIANO 500 ALLA CALCE with 5% of VALIS and apply a thin layer at a time with long strokes, preserving the Flowered effect, going over the surface continually with the spatula not loaded with product, until a smooth surface is obtained. This is the way to achieve the Semitransparent Flowered effect. Coverage: on a smooth surface, approx. 1 litre per 1 - 2 square metres.

**GRASSELLO DI CALCE with Antique effect (Ref. 5 Col. 452 C)** - Spread the GRASSELLO DI CALCE with a PV 43, PV 44 or PV 45 stainless trowel, leaving a thickness of product of about 1 mm on the surface and leaving the finish smooth and compact. After about 6 hours at 20°C, sand well and proceed with spreading the GRASSELLO DI CALCE with irregular strokes 6 - 10 cm long, spaced 4 - 6 cm apart, over the entire surface to be covered. After about an hour at 20°C, start again from the beginning of the surface decorated with the first coat, applying strokes as described above, but covering the surface, in such a way that each stroke partly overlaps strokes already applied. This is the way to achieve the Semitransparent Antique effect. Coverage: on a smooth surface, approx. 1 litre per 2 - 3 square metres. **MARMORINO with Antique effect (Ref. 6 Col. 438 C)** - Spread the MARMORINO with a PV 43, PV 44 or PV 45 stainless trowel, leaving a thickness of product of about 2 - 3 mm on the wall, over a surface of 4 - 5 square metres, in vertical strips working from top to bottom. While the product is still wet, go over the surface again with the stainless trowel in an irregular pattern. After about 8 hours at 20°C, sand lightly and use a spatula to remove any excessively obvious lumps or high points. Next, dampen the applied MARMORINO slightly with water, spreading the water with a brush or a manual spray. To facilitate the application of the second coat of MARMORINO and avoid the formation of joint-lines when application is complete, we recommend that it should be applied simultaneously by two operators: one of them should spread the MARMORINO while the other should go over the surface with a stainless trowel while the product is in tension and in the process of drying, smoothing it continually in all directions to obtain the Smooth Polished Antique effect with outstanding antiqued finish. Coverage: on a smooth surface, approx. 1 litre per 0.8 - 1 square metre. 15 days after application MARMORINO

acquires its definitive properties and becomes breathable and washable.

**MARMORINO with Veined effect - MARMORINO with Rustic effect (Ref. 7 Col. 452 D - Ref. 8 Col. 452 D)** - Spread the MARMORINO with a PV 43, PV 44 or PV 45 stainless trowel, leaving a thickness of product of about 3 - 4 mm on the wall, over a surface of 3 - 4 square metres, in vertical strips working from top to bottom. While the product is still wet, go over the surface with the special PV 84 spatula (PV 85 for hard-to-reach areas), with long, wavy strokes, in a vertical, horizontal or diagonal direction, depending on the effect you wish to achieve. For the Rustic effect, with the MARMORINO still wet, smooth the product with the same trowel as was used in the initial spreading. After about 8 hours at 20°C, sand to remove any excessively obvious lumps or high points. Next, dampen the applied MARMORINO slightly with water, spreading the water with a brush or a manual spray. To facilitate the application of the second coat of MARMORINO and avoid the formation of joint-lines when application is complete, we recommend that it should be applied simultaneously by two operators: one of them should spread the MARMORINO, still using the stainless trowel, following the direction of the veining already created, while the other should go over the surface with a stainless trowel while the product is in tension and in the process of drying, smoothing and working the surface continually in all directions to obtain the Smooth Polished Marble effect. To obtain the Rustic effect, on the other hand (Ref. 8 Col. 452 D), when the MARMORINO is in tension, dampen the PV 46 sponge trowel and pass it in a circular direction over the surface decorated with MARMORINO while applying light pressure, until the Rustic effect is achieved. Coverage: on a smooth surface, approx. 1 litre per 0.4 - 0.5 square metre. To obtain an aesthetic effect of particular beauty, a marble effect with more pronounced veining (Ref. 7 Col. 452 D), dilute the GRASSELLO DI CALCE with 5% VALIS and spread a thin layer of the product over the MARMORINO with Veined effect, using a stainless trowel. Try to always apply it in the same direction as the veining created earlier, smoothing it continually with the stainless trowel. Use GRASSELLO DI CALCE of a similar colour to the MARMORINO already applied, or even use contrasting colours, following the dictates of your imagination. Coverage: approx. 1 litre per 9 - 10 square metres (GRASSELLO DI CALCE). 15 days after application, with a subsequent application of GRASSELLO DI CALCE, the MARMORINO acquires its definitive properties and becomes breathable and washable.

**INTONACHINO ALLA CALCE (Ref. 9 Col. 438 D)** - Spread a coat of intonachino ALLA CALCE with a PV 43, PV 44 or PV 45 stainless trowel, and refinish, while the surface is still wet, with the PV 46 sponge trowel or a plastic trowel, with circular movements. To obtain a smoother and more uniform finish, wait several minutes until the product is in tension before proceeding to the finish with the sponge trowel. Coverage: on a smooth surface, approx. 1 litre per 0.6 - 0.7 square metre.

**PITTURA ANTICA CALCE (Ref. 10 Col. 438 D)** - PITTURA ANTICA CALCE should be diluted with 20 - 30% water and may be applied with a brush, a roller or by spraying to thoroughly hardened surfaces. For application to doubtful surfaces, remove all old paint, sand well and apply a coat of PRIMER 200. After about 8 hours at 20°C, apply the two covering coats of PITTURA ANTICA CALCE. Wait approximately 2 - 4 hours between the first and second coats (the temperature should remain constant at 20°C). Coverage: on a smooth wall, approx. 1 litre per 4 - 5 square metre.

**POLISHING AND PROTECTION:** STUCCO VENEZIANO 800 and STUCCO VENEZIANO 500 ALLA CALCE can be given a Polished finish by smoothing the surface with a spatula or stainless trowel, and exercising continuous pressure on the product while it is still in tension and in the process of drying, until the desired state of polish is achieved. Alternatively, the product may be polished when dry with 2000 grade micro-fine sandpaper, with rotary movements, while exerting constant pressure on the surface. To make STUCCO VENEZIANO 800 washable and impart a more highly polished surface, CERA LUCIDANTE 370 (with solvent) or CERA LUCIDANTE 420 ALL'ACQUA should be applied. However, to make STUCCO VENEZIANO 500 ALLA CALCE, Grassetto di calce and Marmorino more washable, with a higher polish, CERA LUCIDANTE 370 or 420 should be applied neat. When the CERA (wax) is dry, after 3 - 4 hours at 20°C, the surface still remains matt. To polish it, go over it with a woollen cloth, with rotary movements, exerting pressure on the surface until the desired polish is obtained.

**TECHNICAL DATA: Specific Weight:** PRIMER 200: 1,550 ± 30 g/litre at 20°C; Stucco veneziano 800: 1,700 ± 30 g/litre at 20°C; STUCCO VENEZIANO 500 ALLA CALCE: 1,420 ± 30 g/litre at 20°C; Grassetto di calce: 1,500 ± 30 g/litre at 20°C; Marmorino: 1,700 ± 30 g/litre at 20°C; Intonachino minerale: 1,700 ± 30 g/litre at 20°C; PITTURA Antica calce: 1,360 ± 30 g/litre at 20°C; VALIS: 1,000 ± 30 g/litre at 20°C; CERA LUCIDANTE 370 (with solvent): 790 ± 30 g/litre at 20°C CERA LUCIDANTE 420 ALL'ACQUA: 1,000 ± 30 g/litre at 20°C **Dilution:** All the products in the ROCOCO RANGE are ready for use, with the exception of PITTURA ANTICA CALCE, which should be diluted with 20 - 30% water. **Packaging:** PRIMER 200 is available in 0.5 litre and 2.5 litre packs; STUCCO VENEZIANO 800 BIANCO, STUCCO VENEZIANO 500 BIANCO ALLA CALCE and GRASSELLO DI CALCE BIANCO are supplied in 1 litre, 4 litre and 12 litre packs; MARMORINO BIANCO and PITTURA ANTICA CALCE BIANCA are available in 4 litre and 12 litre packs; INTONACHINO MINERALE BIANCO comes in 12 litre packs; COLORI' comes in 80 ml and 480 ml packs; VALIS is available in 200 ml and 750 ml packs; finally, CERA LUCIDANTE 370 and 420 come in 1 litre and 4 litre packs. **Application temperature:** no lower than +5°C and no higher than +30°C, away from direct sunlight and wind. **Drying:** dry after 3 to 4 hours at a temperature of 20°C. Hardens after 24 hours, depending on the atmospheric temperature. **Strength:** when hardening is complete, a breathable film develops with good resistance to knocks and normal abrasion. marmorino, intonachino minerale and PITTURA ANTICA CALCE become resistant to normal extremes of weather, in spite of the fact that whitish stains may form as a result of the lime contained in the product. To reduce the occurrence of these stains, 1 - 2 protective coats of FINISH V 15 may be applied by brush or spraying. **Cleaning equipment:** if the product has not yet dried, with water; once the product has dried, equipment should be cleaned mechanically. **Storage:** make sure the tin is tightly closed, even after use, at a temperature no lower than +5°C and no higher than +30°C. **Stability:** approximately 2 years.

**SAFETY INSTRUCTIONS:** Avoid direct contact with the skin. Protect the eyes and face. In the event of contact, wash immediately with abundant water and consult a doctor. Equipment must not be washed in watercourses, drains etc.

**N.B.** - All the pieces of information hereafter given are precise and accurate on the basis of our own experience. However as the conditions in which ROCOCO' is applied are beyond our direct control, the manufacture does not take any responsibility for the advice and suggestions given.

There maybe a 20 - 30% colour-shade difference between a lot and another, from the colours once they are applied and the standard ones shown in the catalogue. It is highly suggested to try the product first on a small surface, considering that ROCOCO' is made of natural products and special resins which differently react according to humidity, to heat, to ventilation and how ROCOCO' is applied. In this way each application will be personalised and it will have its own design.

**IMPORTANT: ROCOCO' PRODUCTS FINAL ASPECT HAS NOT A STANDARD PATTERN BUT IT VARIES FROM APPLICATOR TO APPLICATOR ACCORDING TO HIS SKILLS AND HOW HE APPLIES IT. FOR THIS REASON IT IS SUGGESTED THAT EACH APPLICATION SHOULD BE CARRIED OUT BY THE SAME DECORATOR TO AVOID ANY FLAWS BOTH IN COLOUR SHADES AND IN THE DESIGN.**















VALPAINT TUNISIE S.A.  
Zone Industrielle Zaghouan  
1100 ZAGHOUAN - TUNISIE  
Tel +216 71 751 223 / +216 72 681 051  
Fax +216 71 751 344 / +216 72 681 071  
E-mail: valpaint.tunisie@valpaint.com.tn

VALPAINT ESPANA S.L.  
Calle Magdalenes, 25 3°  
08002 BARCELONA - ESPAÑA  
Tel. +34 93 6382645  
Fax +34 93 6382735  
E-mail: info@valpaint.es

VALPAINT DESIGN D.O.O.  
Džemala Bijedića, 281  
71000 SARAJEVO - BIH  
Tel. +387 33 626134 / +387 33 761116  
Fax. +387 33 761115  
E-mail: valpaint@bih.net.ba

Altro Punto Vendita:  
V Proleterske Brigade, 255  
81000 PODGORICA - MONTENEGRO  
Tel./Fax +382 20 656938  
E-mail: info@valpaint-design.com

Altro Punto Vendita:  
TC Solidum-Škorpikova, 11  
10090 ZAGREB - CROATIA  
Tel./Fax. +385 1 3794918  
E-mail: info@valpaint-design.hr



VIDEO



**VALPAINT S.p.A.**

Via dell'Industria, 80 - 60020 POLVERIGI (AN) ITALY - Tel. +39 071 906383 (r.a.) - Fax +39 071 906384 www.valpaint.it - E-mail: info@valpaint.it

**AZIENDA CERTIFICATA ISO 9001:2008 ED ISO 14001:2004**

ROGOCO

ROGOCO