

BOA®-H – Maintenance-free Bellows-type Globe Valves

Industry

Water

Waste Water

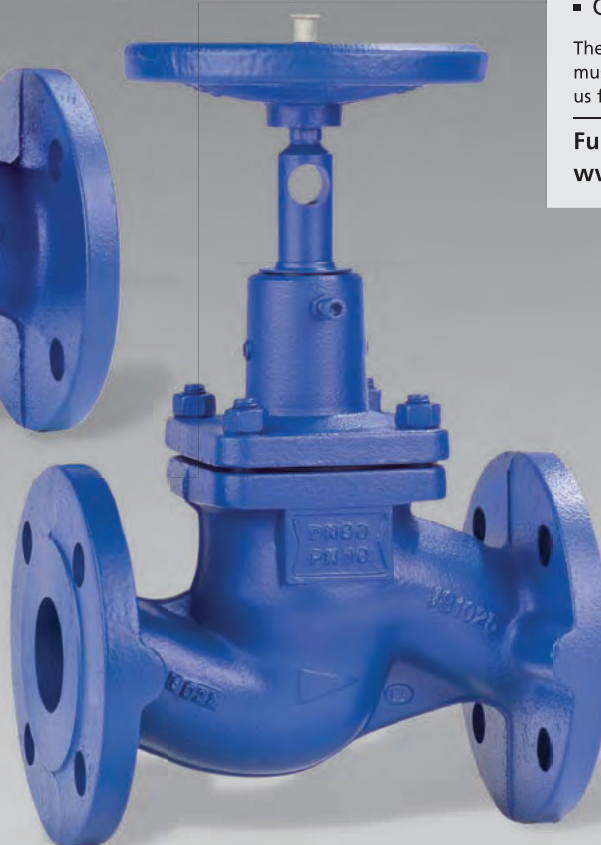
Energy

Building Services

Mining



BOA®-H
EN-GJL-250



BOA®-H
EN-GJS-400-18-LT

Applications:

- Hot water heating systems
- High-temperature hot water heating systems
- Heat transfer systems
- Pressure vessel equipment
- Steam boiler systems
- Other fluids on request.

The limits given in the technical codes must be complied with. Please contact us for details.

Further information:

www.ksb.com/products

Your contact:

ДП «Ліаг Технік Сервіс Україна»
61035, г. Харків, ул. Каштанова, 2
тел.: (057) 756-24-42, 721-32-46, 721-32-45
E-mail: kharkov@liagtechnik.com.ua
Сайт: www.liag.prom.ua

BOA[®]-H – Maintenance-free Bellows-type Globe Valves

1 Improved energy efficiency of the system

Short, easy-to-insulate bonnet minimises heat losses.

2 Optimised model made of nodular cast iron for high-temperature applications

Made of optimally combined materials without plastic components, the valve provides excellent handling even at very high temperatures.

3 Greater reliability and longer service life of bellows

The bellows is fully confined when the valve is open and protected against surge pressures. The bellows is welded to the stem, so no vibrations are transmitted from the valve plug.

4 High user comfort at no extra charge

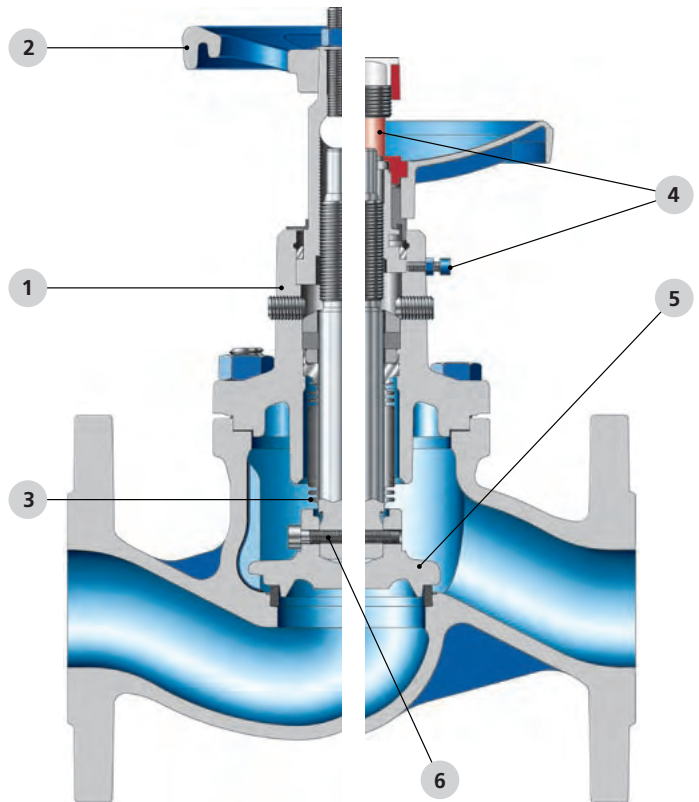
- Position indicator with travel stop and locking device are standard features on all valve sizes.
- Colour coding for identification of valve design during replacement work. The plug type and plug/seat interface material can be checked from outside without removing the insulation.

5 Optimum value for money: one valve offers two functions.

One valve model for shut-off and throttling thanks to throttling valve plug up to DN 100. Good throttling function with excellent flow coefficients.

6 Reduced maintenance costs

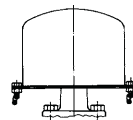
Instead of replacing the complete upper section, only the valve plug is replaced, if necessary.



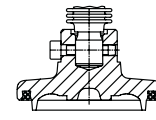
**BOA[®]-H
EN-GJS-400-18-LT**

**BOA[®]-H
EN-GJL-250**

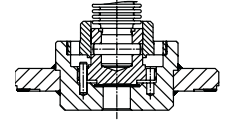
Variants



Lead-sealable cap (assembly set) (only EN-GJL-250)



Plug with PTFE gasket, DN 15 - 200



Pilot plug, from DN 200

Pressure/temperature ratings

Nom. pressure	Material	Permissible operating pressures in bar at temperatures in °C ¹⁾				
		-10 to +120	+200	+250	+300	+350
PN16	EN-GJL-250	16	12.8	11.2	9.6	–
	EN-GJS-400-18-LT	16	14.7	13.9	12.8	11.2
PN25	EN-GJS-400-18-LT	25	23	21.8	20	17.5

¹⁾ Intermediate temperatures can be derived by linear interpolation.

Other variants

- Throttling valve plug for DN > 100
- High-temperature resistant paint (grey aluminium)
- Oil and grease free version
- Special flange designs

Additional type series

- BOA[®]-H angle valve
- BOA[®]-R non-return valve
- BOA[®]-S strainer

